

SPOKANE, WASHINGTON

RNAV (GPS) RWY 23

APCH CRS	Rwy Idg	13,899
231°	TDZE	2423
	Arprt Elev	2462

AL-553 (USAF)

FAIRCHILD AFB (KSKA)

RNP APCH

ALSIF-1

MISSED APPROACH: Climb to 3000, then climbing right turn to 7000 direct to KNOCK and hold, continue climb in hold to 7000.

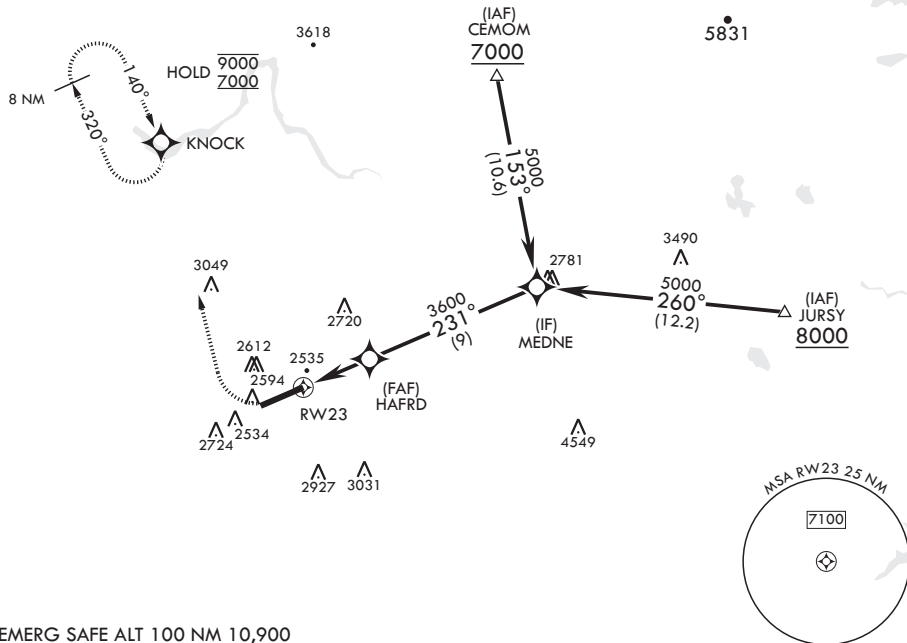
RADAR required for KNOCK holding.



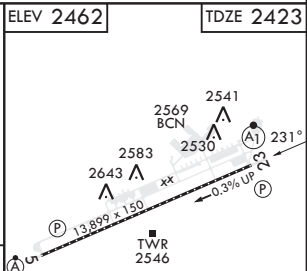
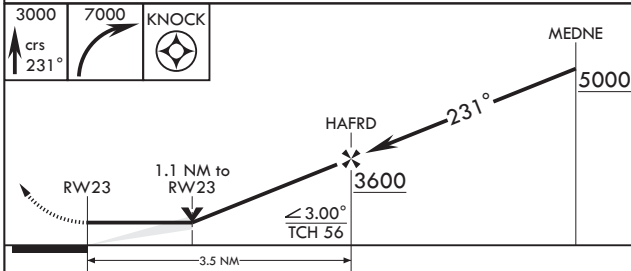
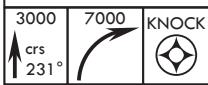
⚠ * When ALS inop, increase CAT A8 RVR to 55 and vis to 1 mile, CAT CDE vis to 1 1/4 miles.

ATIS 257.625	SPOKANE APP CON 123.75 282.25 (208°-028°) 133.35 263.0 (029°-207°)	TOWER 120.35 233.7	GND CON 123.6 275.8
------------------------	--	------------------------------	-------------------------------

** Circling S of Rwy 5-23 NA.



EMERG SAFE ALT 100 NM 10,900



CATEGORY	A	B	C	D	E
LNAV MDA*	2820/24 397 (400-½)		2820/35 397 (400-¾)		
CIRCLING**	2900-1 438 (500-1)	2920-1 458 (500-1)	3040-1½ 578 (600-1½)	3040-2 578 (600-2)	3600-3 1138 (1200-3)

HIRL all Rwys
TDZL/CL Rwy 5

SPOKANE, WASHINGTON

47°37'N - 117°39'W

FAIRCHILD AFB (KSKA)

Amdt 2 03NOV22

RNAV (GPS) RWY 23

NW-1, 05 SEP 2024 to 03 OCT 2024

NW-1, 05 SEP 2024 to 03 OCT 2024