

Orig 18312

JOINT BASE ANDREWS (KADW)

CAMP SPRINGS ONE DEPARTURE (CAMP1•ADW)

CAMP SPRINGS, MARYLAND

ATIS 133.675 251.05
 CPDLC
 GND CON
 121.8 275.8
 ANDREWS TOWER
 118.4 349.0
 POTOMAC TRACON DEP CON
 118.95 257.2

SL-561 [USAF]

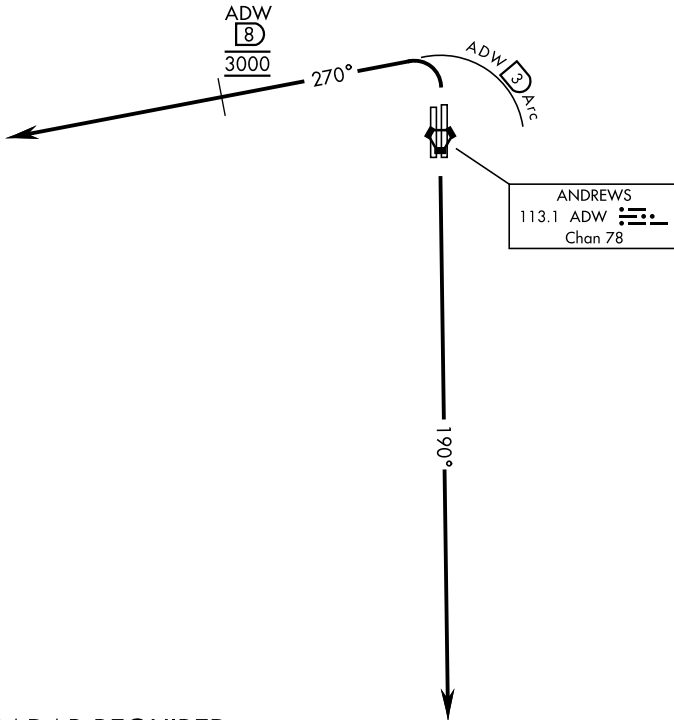
Rwy	Knots	60	120	180	240	300	360
1L/R	V/V(fpm)	380	760	1140	1520	1900	2280

ATC Climb Rate to 3000

If unable to make published climb gradient
advise ATC prior to departure.

1149
A

RADAR VECTORS REQUIRED WITHIN 10 NM FROM DEPARTURE



RADAR REQUIRED



DEPARTURE ROUTE DESCRIPTION

TAKE-OFF RWY 1L/1R: Turn left climb on heading 270° within 3 DME of ADW VORTAC, cross ADW 8 DME at 3000. Expect radar vectors.

TAKE-OFF RWY 19R/19L: Climb on heading 190° to 3000. Expect radar vectors to the west.

CAMP SPRINGS ONE DEPARTURE (CAMP1•ADW)

CAMP SPRINGS, MARYLAND
JOINT BASE ANDREWS (KADW)

NE-3, 05 SEP 2024 to 03 OCT 2024

NE-3, 05 SEP 2024 to 03 OCT 2024