

JEFSN ONE DEPARTURE (RNAV) (JEFSN1•JEFSN)

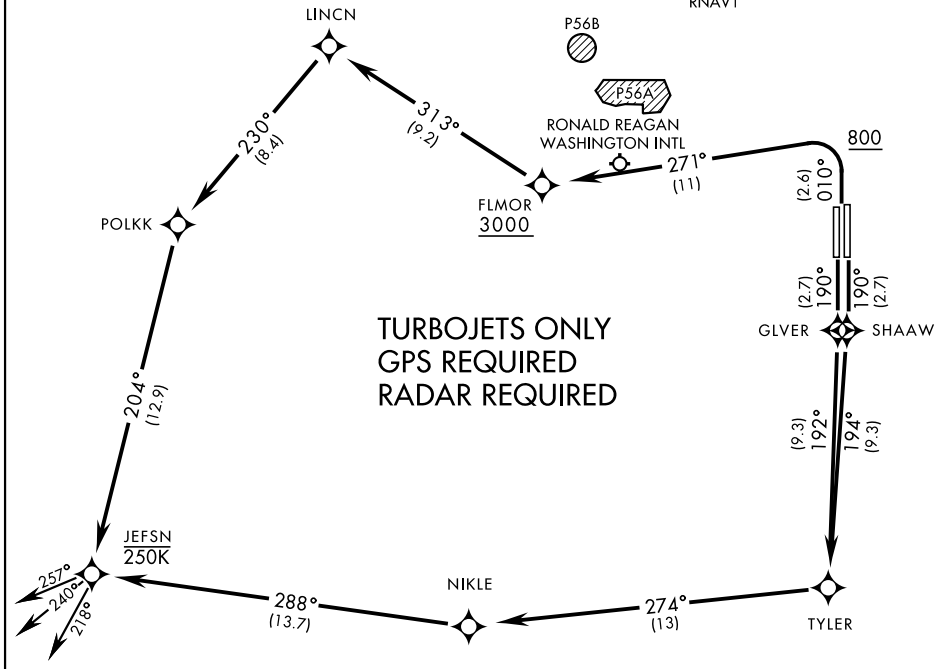
JOINT BASE ANDREWS (KADW)
CAMP SPRINGS, MARYLAND

ATIS 133.675 251.05
CPDLC
GND CON
121.8 275.8
ANDREWS TOWER
118.4 349.0
POTOMAC TRACON DEP CON
118.95 257.2

SL-561 [USAF]
(PAGE 1 of 2)

**TOP ALTITUDE:
3000**

Max speed 250KIAS until JEFNSN.
Prohibited (P56) 1.5NM north
of DCA avoid surface to FL180.
RNAV1



NE-3, 05 SEP 2024 to 03 OCT 2024

NE-3, 05 SEP 2024 to 03 OCT 2024

(TRANSITIONS CONTINUED
ON PAGE 2 of 2)

DEPARTURE ROUTE DESCRIPTION

TAKE-OFF RWY 1L/1R: Climb on heading 010° to 800, then climbing left turn to 3000 direct FLMOR. Then via depicted route to JEFNSN, thence...

TAKE-OFF RWY 19L: Climb on heading 190° direct SHAAW then via depicted route to JEFNSN, thence...

TAKE-OFF RWY 19R: Climb on heading 190° direct GLVER then via depicted route to JEFNSN, thence...

... on assigned transition. Maintain 3000, expect further clearance to filed alt within ten (10) minutes after departure.

- FLASK TRANSITION (JEFSN1 • FLASK)
- GLANC TRANSITION (JEFSN1 • GLANC)
- MAULS TRANSITION (JEFSN1 • MAULS)
- MELTN TRANSITION (JEFSN1 • MELTN)
- RRSIN TRANSITION (JEFSN1 • RRSIN)

JEFSN ONE DEPARTURE (RNAV) (JEFSN1•JEFSN)

Amdt 3 26MAR20

CAMP SPRINGS, MARYLAND
JOINT BASE ANDREWS (KADW)