

VUDOO TWO ARRIVAL (RNAV) Transition Routes

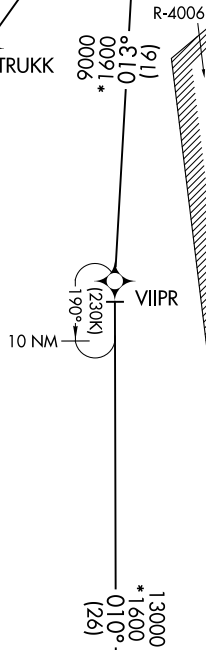
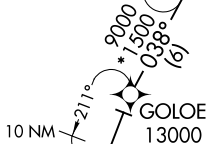
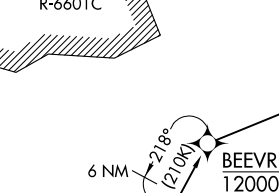
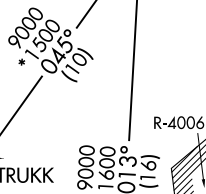
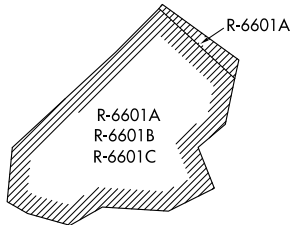
POTOMAC APP CON
126.4 282.375
D-ATIS
133.675 251.05
TOWER
118.4 349.0

R-6611A & B

R-6613A

See following page
for arrival routes

VUDOO
9000



- NOTE: RADAR required.
- NOTE: RNAV 1.
- NOTE: DME/DME/IRU or GPS required.
- NOTE: P56 area A/B 1.5 NM north of DCA, avoid surface to 18000 MSL.

(CONTINUED ON FOLLOWING PAGE)
(NARRATIVE ON FOLLOWING PAGE)

BEEVR TRANSITION (BEEVR.VUDOO2): (ATC assigned only).
 CIBAC TRANSITION (CIBAC.VUDOO2)
 THHMP TRANSITION (THHMP.VUDOO2)

NOTE: Chart not to scale.

NE-3, 05 SEP 2024 to 03 OCT 2024

NE-3, 05 SEP 2024 to 03 OCT 2024

VUDOO TWO ARRIVAL (RNAV) Transition Routes