

DOVER, DELAWARE

# ILS RWY 1 (CAT II)

DOVER AFB (KDOV)

LOC I-DOV <b>109.95</b>	APCH CRS <b>015°</b>	Rwy Idg TDZE Arprt Elev <b>9602</b> <b>25</b> <b>29</b>
----------------------------	-------------------------	--

[USAF]

RNAV1-GPS or RADAR required for procedure entry.



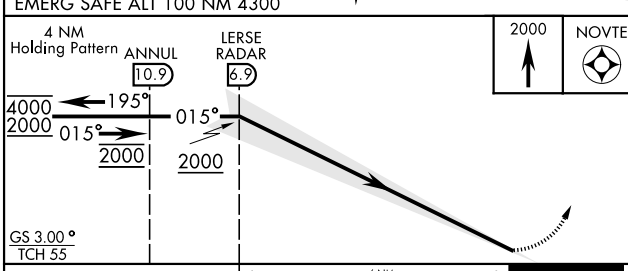
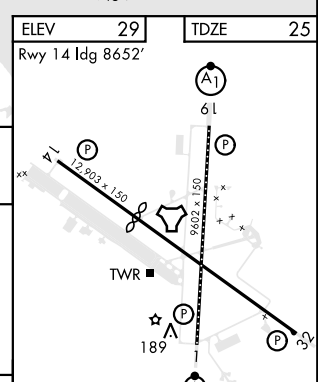
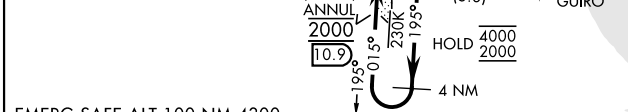
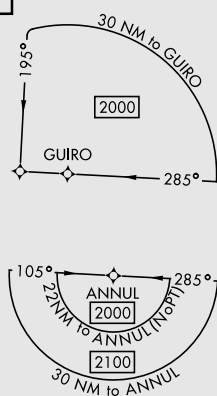
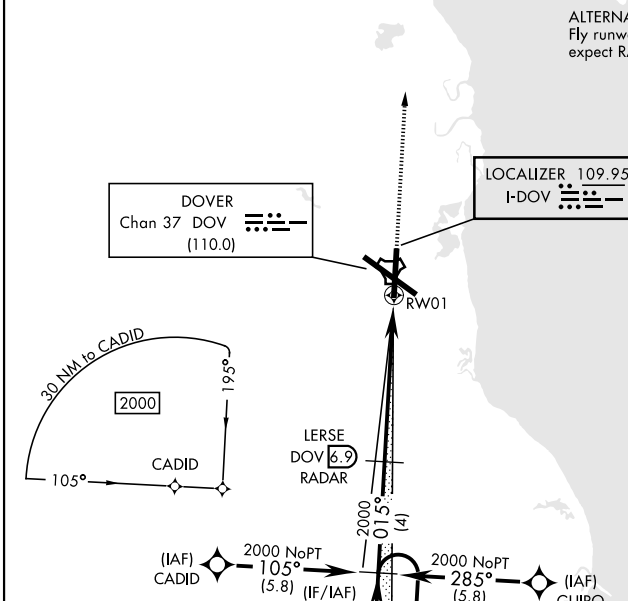
MISSED APPROACH: Climb to 2000 direct NOVTE and hold.

ATIS <b>127.825 273.5</b>	APP CON <b>132.425 257.875</b>	TOWER <b>126.35 279.625</b>	GND CON <b>118.875 225.4</b>	CLNC DEL <b>125.55 289.4</b>
------------------------------	-----------------------------------	--------------------------------	---------------------------------	---------------------------------



## CATEGORY II ILS-SPECIAL AIRCREW & AIRCRAFT CERTIFICATION REQUIRED

ALTERNATE MISSED APPROACH INSTRUCTIONS: Fly runway heading, climb and maintain 2000, expect RADAR vectors from ATC.



CATEGORY	A	B	C	D	E
S-ILS 1	RA 98/12		100	DA 125	

DOVER, DELAWARE 39°08'N-75°28'W DOVER AFB (KDOV)

Orig 10AUG23

# ILS RWY 1 (CAT II)

NE-3, 05 SEP 2024 to 03 OCT 2024

NE-3, 05 SEP 2024 to 03 OCT 2024