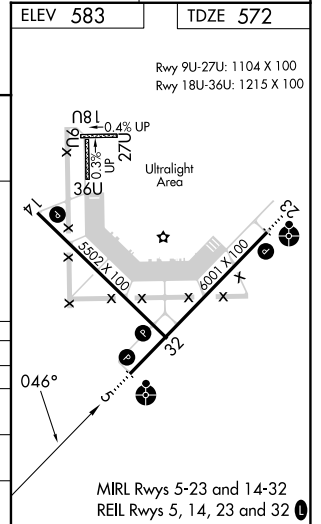
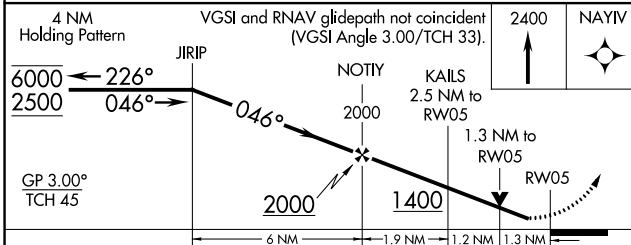
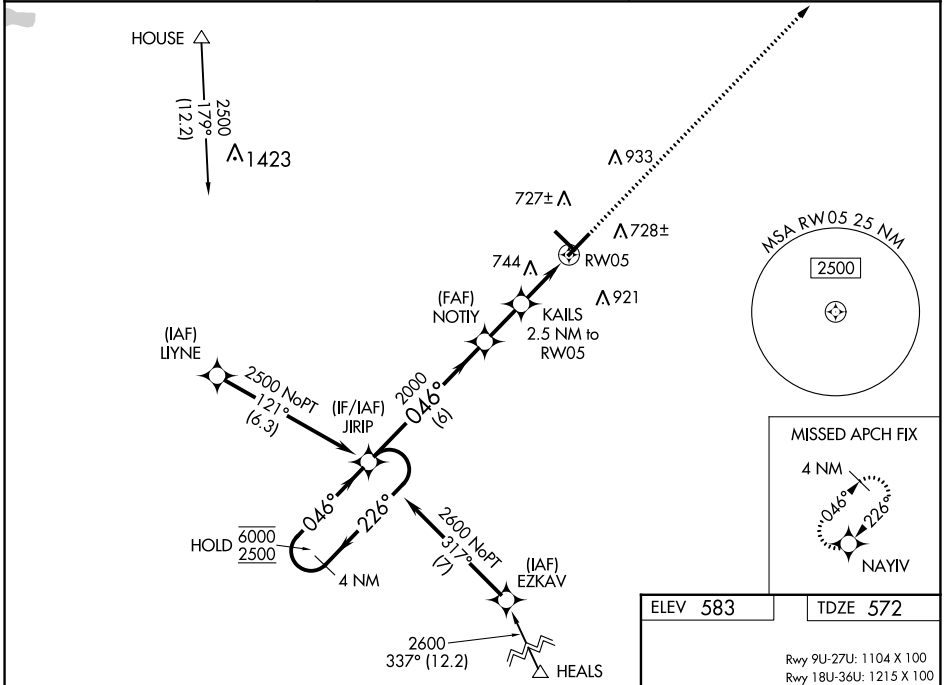


WAAS CH <b>53704</b> <b>W05A</b>	APP CRS <b>046°</b>	Rwy Idg TDZE <b>572</b> Apt Elev <b>583</b>	<b>6001</b>
--	------------------------	---	-------------

# RNAV (GPS) RWY 5

FREEMAN MUNI (SE.R)

RNP APCH - GPS.		ODALS 	MISSED APPROACH: Climb to 2400 direct NAYIV and hold.
Rwy 5 helicopter visibility reduction below 3/4 SM NA. Inop table does not apply to LPV all Cats and LNAV Cats A/B. For uncompensated Baro-VNAV systems, LNAV/VNAV NA below -16°C or above 54°C. For inop ALS, increase LNAV/VNAV Cats C/D visibility to 1 3/8 SM.	NA		
AWOS-3 <b>119.425</b>	LOUISVILLE APP CON <b>132.075 327.0</b>	UNICOM <b>122.8 (CTAF)</b>	



CATEGORY	A	B	C	D
LPV DA	834-1		262 (300-1)	
LNAV/VNAV DA	1017-1 1/8		445 (500-1 1/8)	
LNAV MDA	1000-1	428 (500-1)	1000-1 1/8	428 (500-1 1/8)
CIRCLING	1080-1 497 (500-1)	1140-1 557 (600-1)	1240-1 1/4 657 (700-1 1/4)	1240-2 657 (700-2)

EC-2, 05 SEP 2024 to 03 OCT 2024

EC-2, 05 SEP 2024 to 03 OCT 2024