

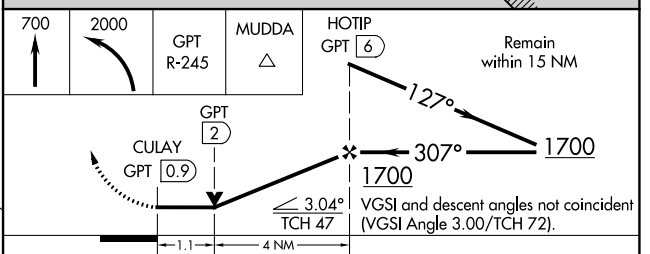
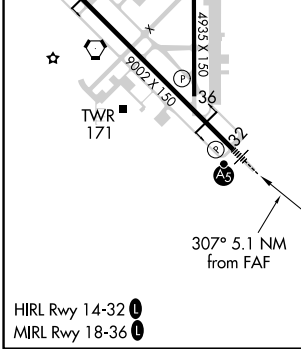
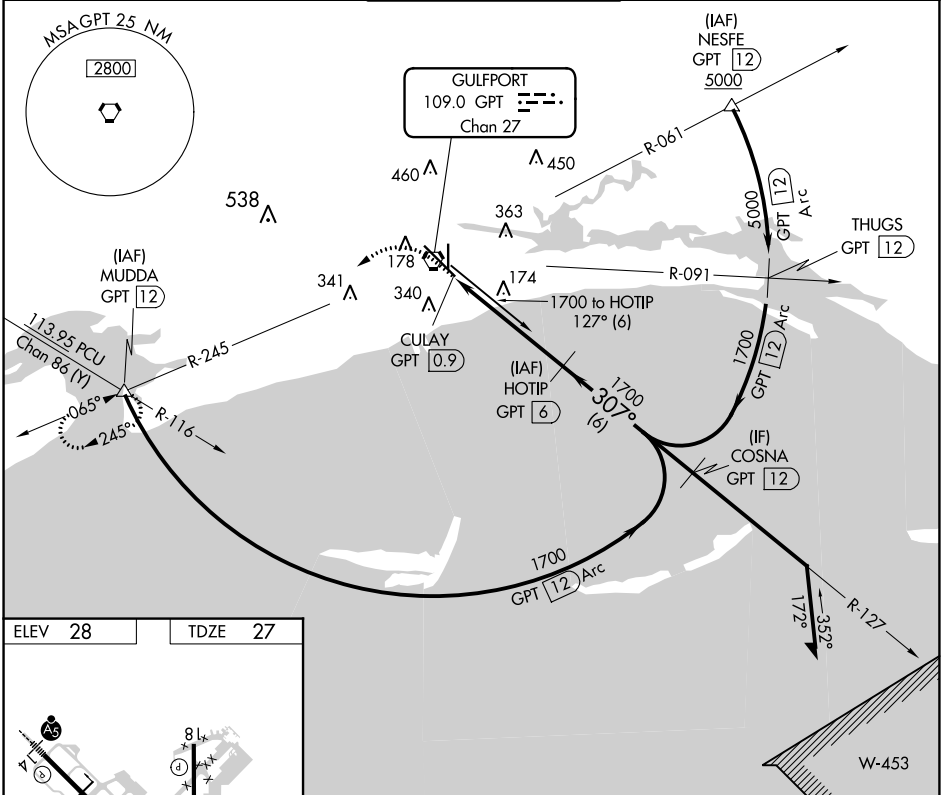
VORTAC GPT 109.0 Chan 27	APP CRS 307°	Rwy Idg TDZE Apt Elev	9002 27 28
--	------------------------	-----------------------------	---------------------------------------

VOR Z RWY 32

GULFPORT-BILOXI INTL (GPT)

DME required.	MALSR 	MISSED APPROACH: Climb to 700 then climbing left turn to 2000 on GPT VORTAC R-245 to MUDDA INT/12 DME and hold.
<p>▼ Rwy 32 helicopter visibility reduction below RVR 4000 NA. ▲ For inop ALS, increase S-32 Cat A/B visibility to RVR 5500, and Cat C/D/E to RVR 6000.</p>		

ATIS 119.45	GULFPORT APP CON * 127.5 254.25	GULFPORT TOWER * 123.7 (CTAF) 339.8	GND CON 120.4 348.6	UNICOM 122.95
-----------------------	---	---	-------------------------------	-------------------------



CATEGORY	A	B	C	D	E
S-32	440/40 413 (500-½)				
C CIRCLING	520-1 492 (500-1)	640-1 612 (700-1)	760-2 732 (800-2)	760-2½ 732 (800-2½)	760-2½ 732 (800-2½)

SC-4, 05 SEP 2024 to 03 OCT 2024

SC-4, 05 SEP 2024 to 03 OCT 2024