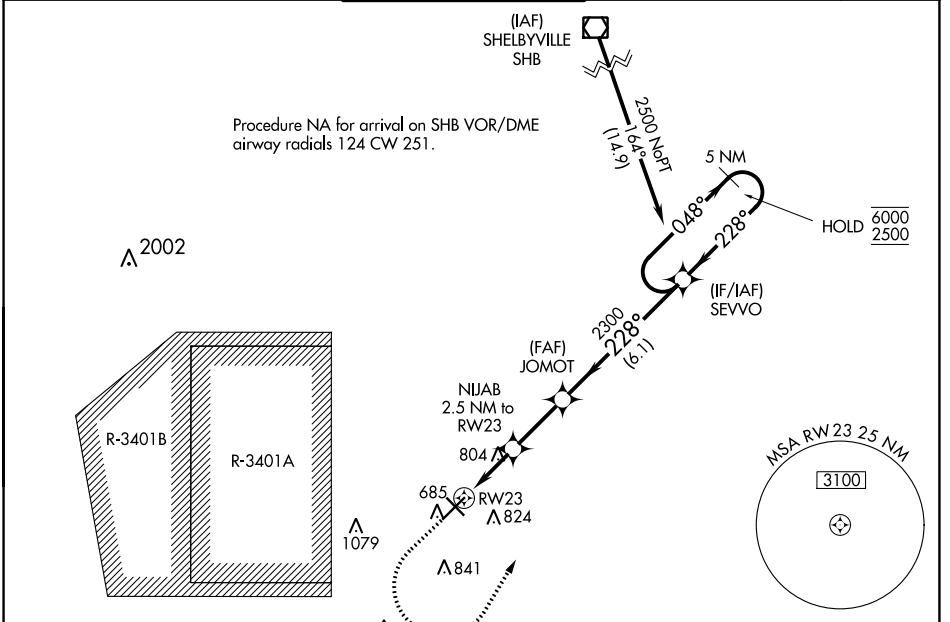


WAAS CH <b>90399</b> <b>W23A</b>	APP CRS <b>228°</b>	Rwy Idg TDZE <b>656</b> Apt Elev <b>656</b>	<b>6401</b>
--	------------------------	---	-------------

# RNAV (GPS) RWY 23

COLUMBUS MUNI (BAK)

RNP APCH - GPS.		MALSR	MISSED APPROACH: Climb to 1200, then climbing left turn to 2500 direct SEVVO and hold.		
For inop ALS, increase LNAV Cat C/D visibility to 1½ SM.					
AWOS-3 <b>119.75</b>	INDIANAPOLIS APP CON <b>134.85 317.8</b>	COLUMBUS TOWER ★ <b>118.6 (CTAF)</b>	GND CON <b>121.6</b>	CLNC DEL <b>134.85</b>	UNICOM <b>122.95</b>



EC-2, 05 SEP 2024 to 03 OCT 2024

EC-2, 05 SEP 2024 to 03 OCT 2024

ELEV 656		TDZE 656
----------	--	----------

1200

2500

SEVVO

JOMOT

NIJAB 2.5 NM to RWY23

1.1 NM to RWY23

RWY23

1500

2300

228°

2300

SEVVO

5 NM Holding Pattern

048° → 6000

← 228° 2500

GP 3.00° TCH 52

1.1 NM | 1.4 NM | 2.5 NM | 6.1 NM

228°

11

1500 X 100

5000 X 100

727

32

CATEGORY	A	B	C	D
LPV DA	906-½ 250 (300-½)			
LNAV MDA	1060-½ 404 (500-½)		1060-¾ 404 (500-¾)	

MIRL Rwy 14-32

HIRL Rwy 5-23

REIL Rws 5, 14, and 32