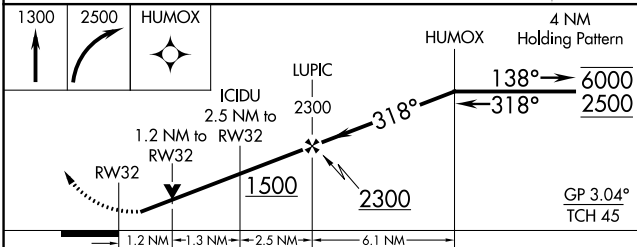
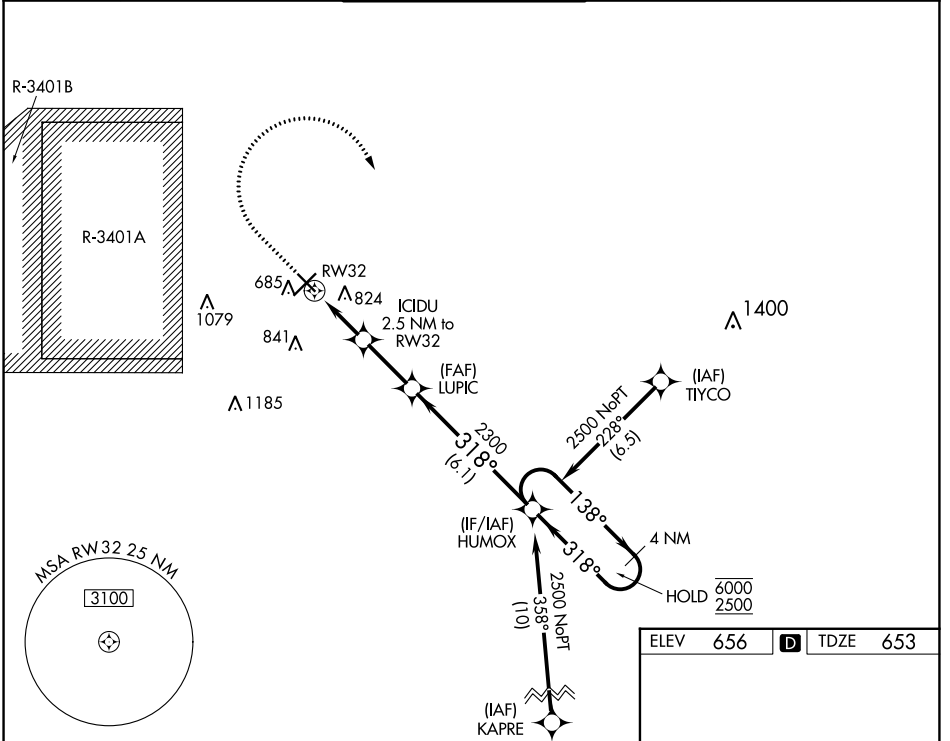


WAAS CH <b>50399</b> <b>W32A</b>	APP CRS <b>318°</b>	Rwy Idg TDZE <b>653</b> Apt Elev <b>656</b>	<b>5000</b>
--	------------------------	---	-------------

# RNAV (GPS) RWY 32

COLUMBUS MUNI (BAK)

RNP APCH - GPS.		MISSED APPROACH: Climb to 1300, then climbing right turn to 2500 direct HUMOX and hold.			
<p><b>▼</b> Rwy 32 helicopter visibility reduction below <math>\frac{3}{4}</math> SM NA. For uncompensated Baro-VNAV systems, LNAV/VNAV NA below -16°C or above 54°C.</p>					
AWOS-3 <b>119.75</b>	INDIANAPOLIS APP CON <b>134.85 317.8</b>	COLUMBUS TOWER ★ <b>118.6 (CTAF) 0</b>	GND CON <b>121.6</b>	CLNC DEL <b>134.85</b>	UNICOM <b>122.95</b>



ELEV	656	TDZE	653
------	-----	------	-----

**MIRL Rwy 14-32**  
**HIRL Rwy 5-23**  
**REIL Rws 5, 14, and 32**

CATEGORY	A	B	C	D
LPV DA	903-1		250 (300-1)	
LNAV/VNAV DA	1056-1 $\frac{1}{8}$		403 (400-1 $\frac{1}{8}$ )	
LNAV MDA	1080-1 427 (500-1)		1080-1 $\frac{1}{4}$ 427 (500-1 $\frac{1}{4}$ )	

EC-2, 05 SEP 2024 to 03 OCT 2024

EC-2, 05 SEP 2024 to 03 OCT 2024