

|  |                        |   |
|--|------------------------|---|
| WAAS<br>CH <b>93808</b><br><b>W35A</b> | APP CRS<br><b>355°</b> | Rwy Idg <b>7201</b><br>TDZE <b>1008</b><br>Apt Elev <b>1009</b> |
|--|------------------------|---|

# RNAV (GPS) RWY 35

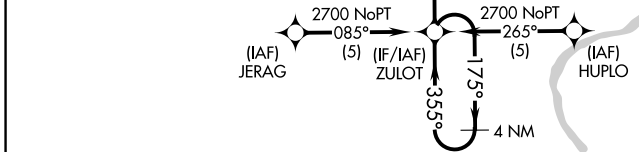
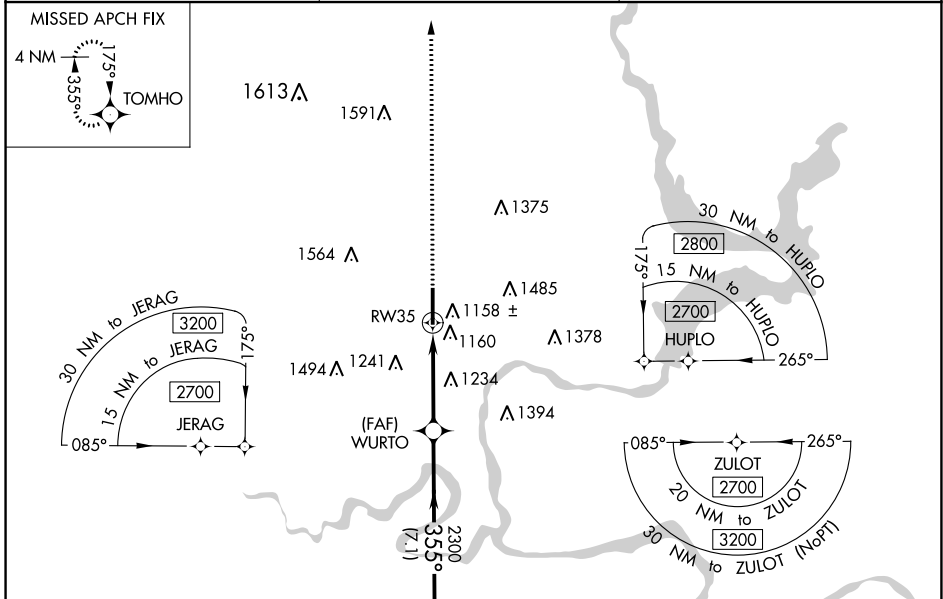
PONCA CITY RGNL (PNC)

**⚠** For uncompensated Baro-VNAV systems, LNAV/VNAV NA below -17°C (2°F) or above 46°C (114°F). DME/DME RNP-0.3 NA. When local altimeter setting not received use Winfield-Arkansas City altimeter setting and increase LPV DA to 1377 feet, LNAV/VNAV DA to 1560 feet and all MDA 100 feet; increase LPV all Cats, LNAV/VNAV all Cats, LNAV Cats C and D and Circling Cats C and D visibility ¼ SM. Baro-VNAV NA when using Winfield-Arkansas City altimeter setting. Visibility reduction by helicopters NA.

**ODALS**

**MISSED APPROACH:**  
Climb to 2800 direct TOMHO and hold.

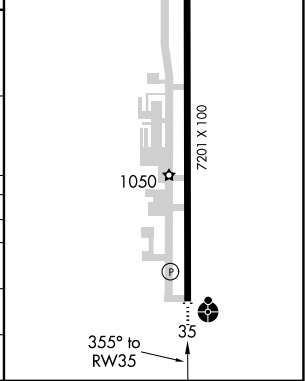
|                        |  |                               |
|------------------------|--|-------------------------------|
| ASOS<br><b>134.075</b> | KANSAS CITY CENTER<br><b>127.8 319.1</b> | UNICOM<br><b>123.0 (CTAF)</b> |
|------------------------|--|-------------------------------|



|                |           |
|----------------|-----------|
| ELEV 1009      | TDZE 1008 |
| HIRL Rwy 17-35 |           |

|                      |        |        |       |
|----------------------|--------|--------|-------|
| 4 NM Holding Pattern | ZULOT  | 2800   | TOMHO |
| 2700 ← 175°          | → 355° | ↑      |       |
| GP 3.00°             | WURTO  | RW35   |       |
| TCH 45               | 2300   |        |       |
|                      | 7.1 NM | 3.9 NM |       |

| CATEGORY     | A                     | B                     | C                       | D                       |
|--------------|-----------------------|-----------------------|-------------------------|-------------------------|
| LPV DA       |                       | 1295-1                | 287 (300-1)             |                         |
| LNAV/VNAV DA |                       | 1478-1¾               | 470 (500-1¾)            |                         |
| LNAV MDA     | 1540-1                | 532 (600-1)           | 1540-1½<br>532 (600-1½) | 1540-1¾<br>532 (600-1¾) |
| CIRCLING     | 1540-1<br>531 (600-1) | 1580-1<br>571 (600-1) | 1800-2½<br>791 (800-2½) | 1880-2¾<br>871 (900-2¾) |



SC-1, 05 SEP 2024 to 03 OCT 2024

SC-1, 05 SEP 2024 to 03 OCT 2024