

# RNAV (RNP) Z RWY 31R

JOHN F KENNEDY INTL (JFK)

APP CRS	Rwy Idg	<b>8486</b>
<b>314°</b>	TDZE	<b>12</b>
	Apt Elev	<b>13</b>

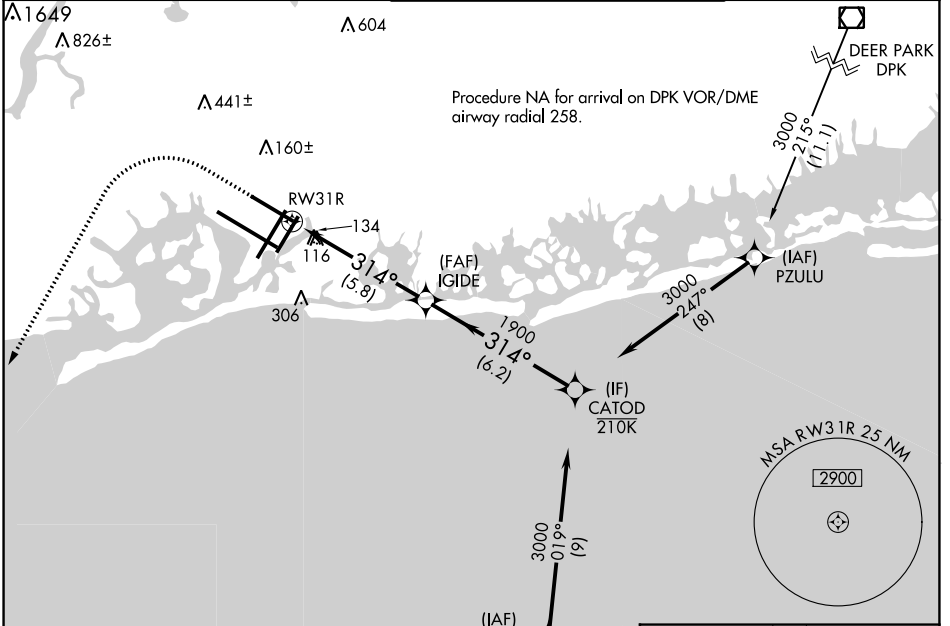
RNP AR APCH.

▼ For uncompensated Baro-VNAV systems, procedure NA below -12°C or above 54°C. Simultaneous approach authorized. Use of FD or AP required during simultaneous operations.

MALSRR

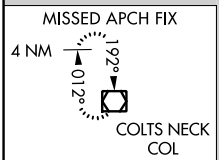
MISSED APPROACH: Climb to 1800 then climbing left turn to 4000 direct COL VOR/DME and hold.

D-ATIS (ARR/DEP) (ARR-NE) (ARR-SW)	NEW YORK APP CON	KENNEDY TOWER Rwys 4R/22L and 13L/31R		GND CON	CLNC DEL	CPDLC
<b>128.725 117.7 115.4</b>	<b>128.125 269.0</b>	<b>119.1 281.55</b>	<b>123.9 281.55</b>	<b>121.9 348.6</b>	<b>135.05 348.6</b>	
		Rwys 4L/22R and 13R/31L				



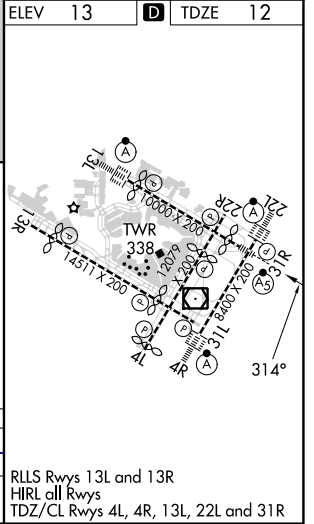
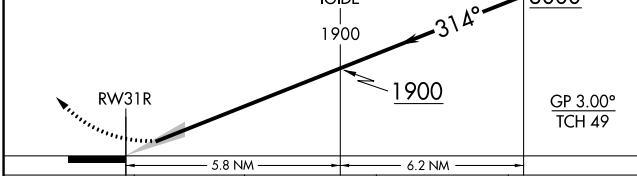
NE-2, 05 SEP 2024 to 03 OCT 2024

NE-2, 05 SEP 2024 to 03 OCT 2024



ELEV 13 TDZE 12

VGSI and RNAV glidepath not coincident (VGSI Angle 3.00/TCH 54).



CATEGORY	A	B	C	D
RNP 0.30 DA		458/50	446 (500-1)	

## AUTHORIZATION REQUIRED

RLS Rwys 13L and 13R  
HIRL all Rwys  
TDZ/CL Rwys 4L, 4R, 13L, 22L and 31R