

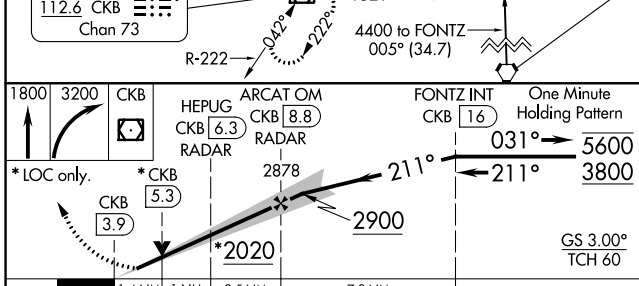
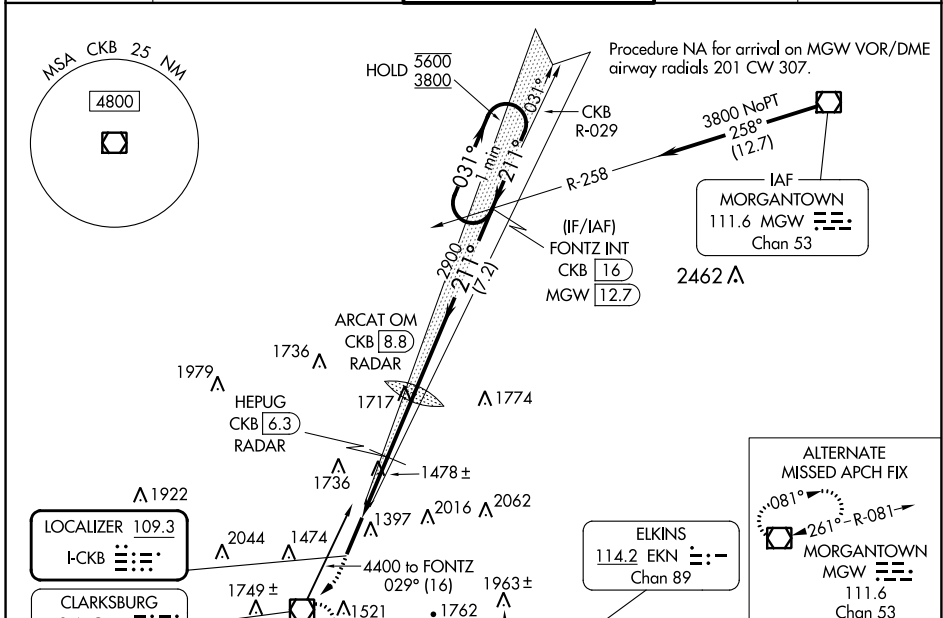
LOC I-CKB <b>109.3</b>	APP CRS <b>211°</b>	Rwy Ldg TDZE Apt Elev	<b>7130</b> <b>1224</b> <b>1224</b>
---------------------------	------------------------	-----------------------------	---

# ILS or LOC RWY 21

NORTH CENTRAL WEST VIRGINIA (CKB)

<p>For inop ALS, increase S-LOC 21 Cat C/D visibility to 2½ SM, and HEPUG fix minimums Cat C/D visibility to 1½ SM. DME from CKB VOR/DME. Autopilot coupled approach NA below 2000.</p>	<p>MALSR</p>	<p>MISSED APPROACH: Climb to 1800 then climbing right turn to 3200 direct CKB VOR/DME and hold, continue climb-in-hold to 3200.</p>

ATIS <b>127.825</b>	CLARKSBURG APP CON ★ <b>121.15 284.65</b>	CLARKSBURG TOWER ★ <b>126.7 (CTAF) 0 257.925</b>	GND CON <b>121.9</b>	UNICOM <b>123.0</b>
------------------------	--	---	-------------------------	------------------------



ELEV 1224	TDZE 1224
-----------	-----------

211°

TWR 1248

7800' x 150'

0.5% UP

REIL Rwy 3

HIRL Rwy 3-21

FAF to MAP 4.9 NM					
Knots	60	90	120	150	180
Min:Sec	4:54	3:16	2:27	1:58	1:38

CATEGORY	A	B	C	D
S-ILS 21		1424/24	200 (200-½)	
S-LOC 21	2020/24 796 (800-½)	2020/40 796 (800-¾)	2020-1¾	796 (800-1¾)
CIRCLING	2020-1 796 (800-1)	2040-1¼ 816 (900-1¼)	2320-3	1096 (1100-3)
HEPUG FIX MINIMUMS (DME or RADAR REQUIRED)				
S-LOC 21	1740/24	516 (600-½)	1740/55	516 (600-1)
CIRCLING	1940-1 716 (800-1)	2040-1¼ 816 (900-1¼)	2320-3	1096 (1100-3)

NE-4, 05 SEP 2024 to 03 OCT 2024

NE-4, 05 SEP 2024 to 03 OCT 2024