

FLINT, MICHIGAN

AL-618 (FAA)

23222

VORTAC FNT 116.9 Chan 116	APP CRS 359°	Rwy Idg 7652 TDZE 782 Apt Elev 782
---	------------------------	---

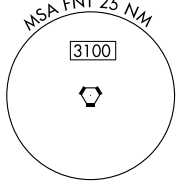
VOR RWY 36

BISHOP INTL (F'NT)

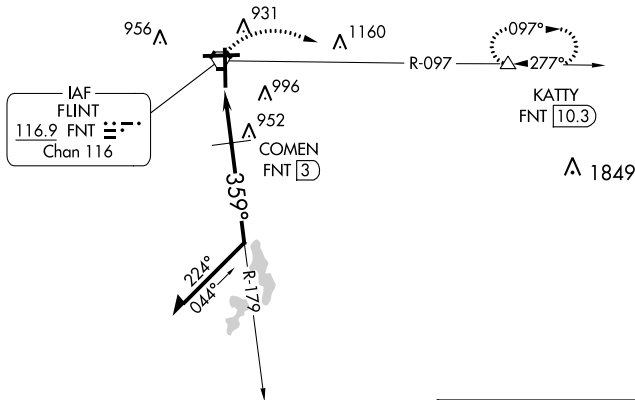
⚠ Rwy 36 helicopter visibility reduction below ¾ SM NA. DME required.

⚠ MISSED APPROACH: Climbing right turn to 3000 on FNT VORTAC R-097 to KATTY/10.3 DME and hold.

ATIS 133.15	GREAT LAKES APP CON * 118.8 257.9	FLINT TOWER * 126.3 (CTAF) 257.9	GND CON 121.9	CLNC DEL 121.75	UNICOM 122.95
-----------------------	---	--	-------------------------	---------------------------	-------------------------

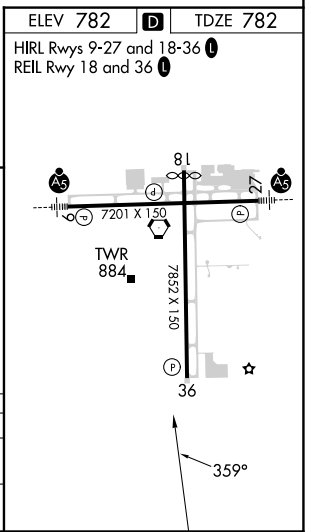
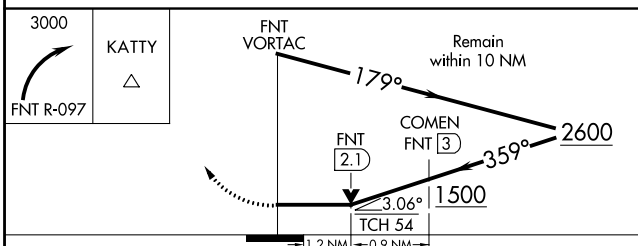


CAUTION: Brightly lighted parking lot 4000' east of approach end Rwy 27 can easily be confused for Rwy 27.



EC-1, 05 SEP 2024 to 03 OCT 2024

EC-1, 05 SEP 2024 to 03 OCT 2024



CATEGORY	A	B	C	D
S-36	1220-1	438 (500-1)	1220-1¼	438 (500-1¼)
C CIRCLING	1240-1 458 (500-1)	1300-1 518 (600-1)	1300-1½ 518 (600-1½)	1520-2¼ 738 (800-2¼)

FLINT, MICHIGAN
Orig-A 24MAY18

42°58'N-83°45'W

BISHOP INTL (F'NT)

VOR RWY 36