

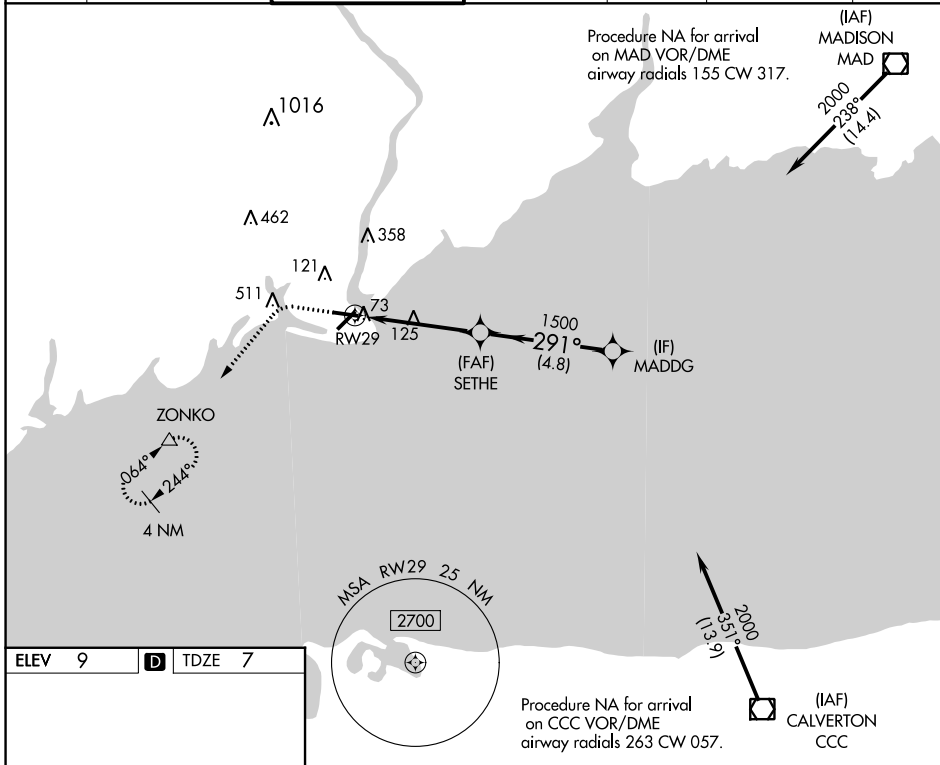
APP CRS <b>291°</b>	Rwy Idg TDZE Apt Elev	<b>4395</b> <b>7</b> <b>9</b>
------------------------	-----------------------------	-------------------------------------

# RNAV (GPS) RWY 29

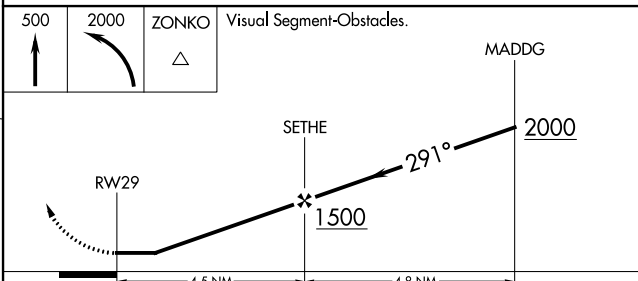
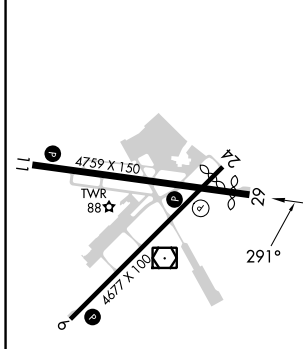
BRIDGEPORT/SIKORSKY (BDR)

RNP APCH - GPS.		MISSED APPROACH: Climb to 500 then climbing left turn to 2000 direct ZONKO and hold.				
<p>▼ Rwy 29 helicopter visibility reduction below 1 SM NA.</p> <p>▲ Circling Rwy 11, 29 NA at night. Rwy 29 Straight-in minimums NA at night.</p>						

ATIS <b>119.15</b>	NEW YORK APP CON <b>124.075 343.65</b>	BRIDGEPORT TOWER* <b>120.9</b> (CTAF) <b>257.8</b>	GND CON <b>121.75 257.8</b>	CLNC DEL <b>121.75</b>	CLNC DEL <b>124.075</b> (When twr closed)	UNICOM <b>123.0</b>
-----------------------	---	---	--------------------------------	---------------------------	---	------------------------



ELEV 9	D	TDZE 7
--------	---	--------



CATEGORY	A	B	C	D
LNAV MDA	380-1		373 (400-1)	
CIRCLING	480-1 471 (500-1)	620-1 611 (700-1)	820-2½ 811 (900-2½)	820-2¾ 811 (900-2¾)

NE-1, 05 SEP 2024 to 03 OCT 2024

NE-1, 05 SEP 2024 to 03 OCT 2024