

(BANGZ.BANGZ1) 22139

AL-625 (FAA)

Transition Routes

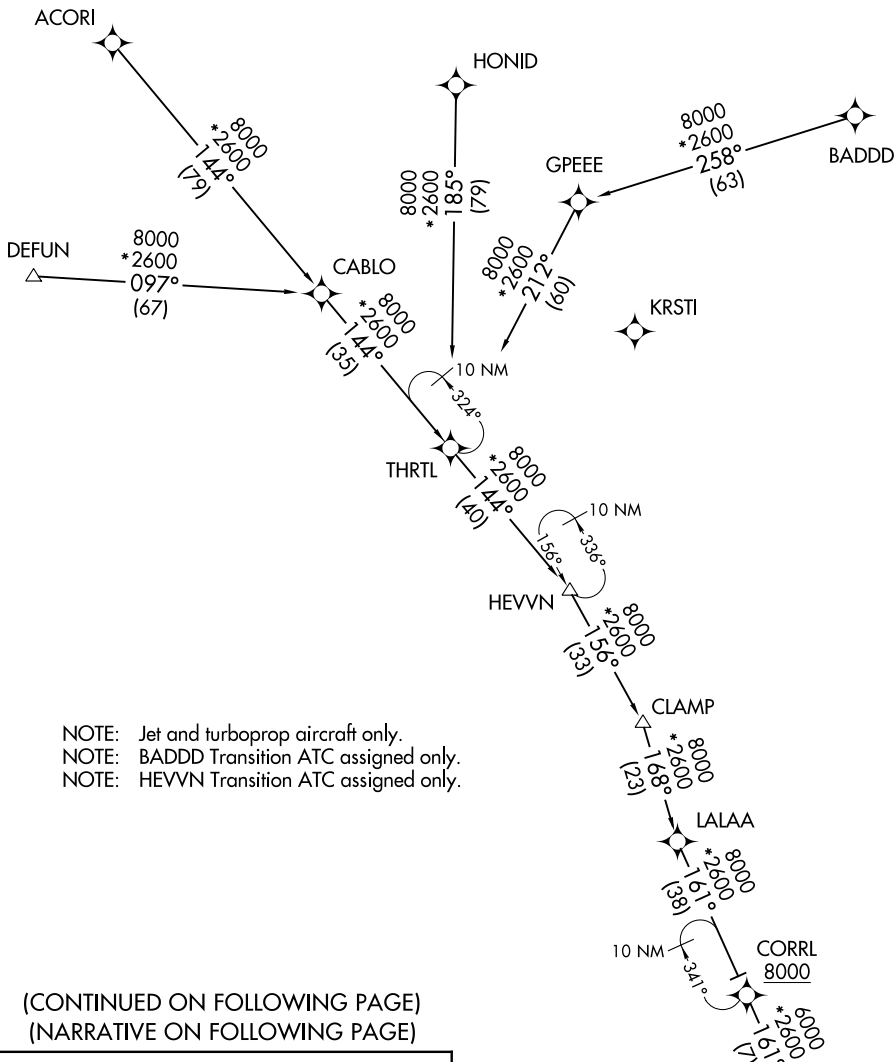
BANGZ ONE ARRIVAL (RNAV)

ST PETERSBURG-CLEARWATER, FLORIDA

RNAV 1 - DME/DME/IRU or GPS.

RADAR required.


TAMPA APP CON
118.8 239.3
PIE ATIS
134.5
SRQ ATIS
124.375



- NOTE: Jet and turboprop aircraft only.
- NOTE: BADD Transition ATC assigned only.
- NOTE: HEVVN Transition ATC assigned only.

(CONTINUED ON FOLLOWING PAGE)
(NARRATIVE ON FOLLOWING PAGE)

- ACORI TRANSITION (ACORI.BANGZ1)
- BADD TRANSITION (BADD.BANGZ1)
- DEFUN TRANSITION (DEFUN.BANGZ1)
- HEVVN TRANSITION (HEVVN.BANGZ1)
- HONID TRANSITION (HONID.BANGZ1)



BANGZ
13000
7000

See following page
for arrival routes.

NOTE: Chart not to scale.

SE-3, 05 SEP 2024 to 03 OCT 2024

SE-3, 05 SEP 2024 to 03 OCT 2024

BANGZ ONE ARRIVAL (RNAV)

(BANGZ.BANGZ1) 19MAY22

ST PETERSBURG-CLEARWATER, FLORIDA

Transition Routes