

APP CRS	Rwy Idg	5107
233°	TDZE	128
	Apt Elev	132

RNAV (GPS) RWY 23

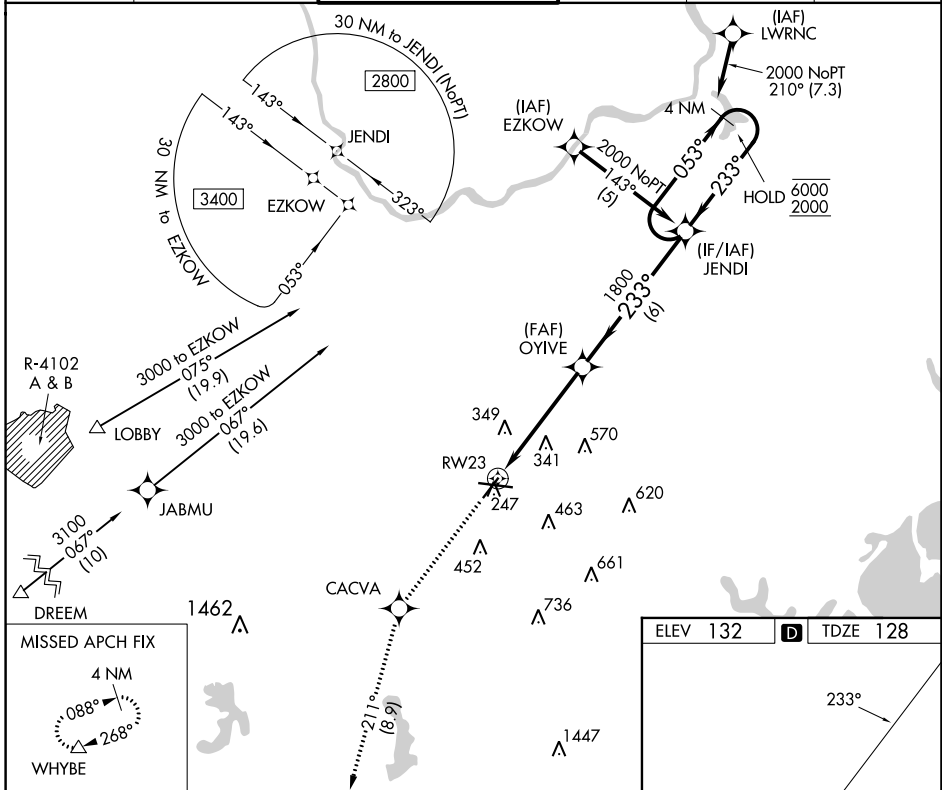
LAURENCE G HANSCOM FLD (BED)

RNP APCH - GPS.

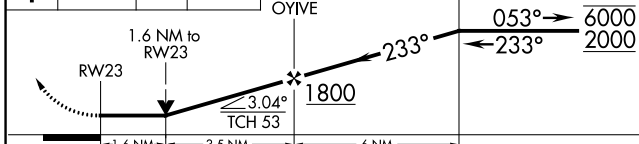
⚠ Rwy 23 helicopter visibility reduction below 3/4 SM NA.

MISSED APPROACH: Climb to 3000 direct CACVA and on track 211° to WHYBE and hold.

ATIS 124.6	BOSTON APP CON 124.4 279.6	HANSCOM TOWER ★ 118.5 (CTAF) 257.2	GND CON 121.7	CLNC DEL 121.85	UNICOM 122.95
----------------------	--------------------------------------	--	-------------------------	---------------------------	-------------------------



3000	CACVA	tr 211°	WHYBE	VGSI and descent angles not coincident (VGSI Angle 3.20/TCH 55).	4 NM Holding Pattern
------	-------	---------	-------	--	----------------------



ELEV 132	D	TDZE 128
----------	----------	----------

The inset chart shows RWY 23 and RWY 5 with the following details:

- Navigation Aids:** 5107 X 1.33, 7011 X 1.50, TW R 247.
- Frequencies:** 121.85, 122.95, 124.6, 124.4, 118.5, 121.7, 121.85, 122.95.
- Other:** MIRL Rwy 5-23, HIRL Rwy 11-29, REIL Rws 5 and 23.

CATEGORY	A	B	C	D
LNAV MDA	640-1	512 (600-1)	640-1 3/8	512 (600-1 3/8)
C CIRCLING	740-1 608 (700-1)	800-1 668 (700-1)	880-2 1/4 748 (800-2 1/4)	920-2 1/2 788 (800-2 1/2)

NE-1, 05 SEP 2024 to 03 OCT 2024

NE-1, 05 SEP 2024 to 03 OCT 2024