


LOC/DME I-EWB <b>109.7</b> Chan 34	APP CRS <b>234°</b>	Rwy Idg TDZE Apt Elev	<b>5000</b> <b>78</b> <b>79</b>
--	------------------------	-----------------------------	---------------------------------------

# LOC BC RWY 23

NEW BEDFORD RGNL (EWB)

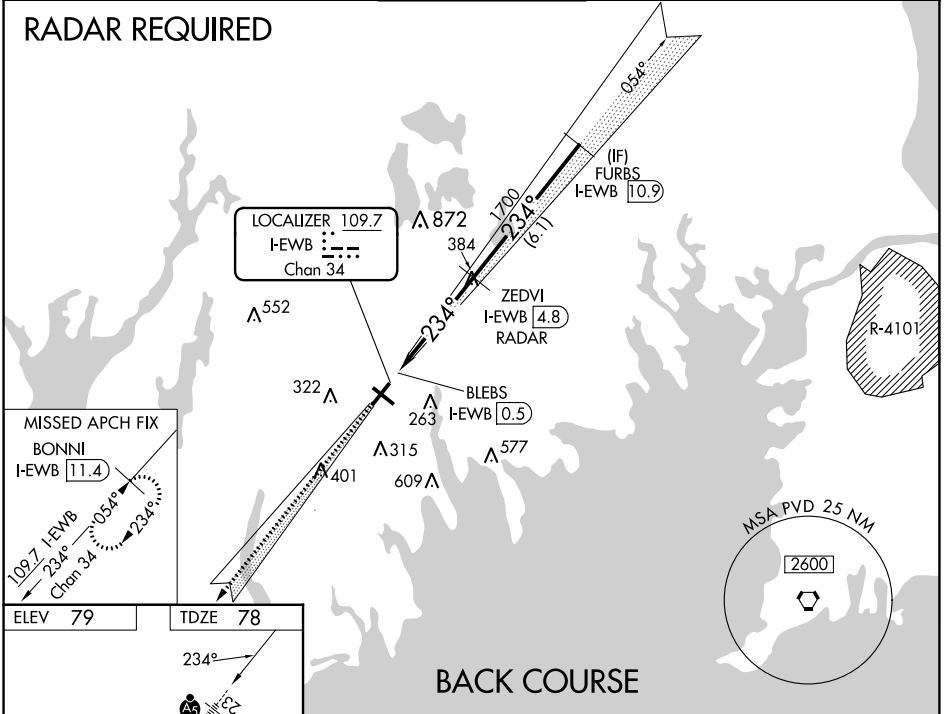
**⚠** When local altimeter setting not received, use Taunton altimeter setting and increase all MDA 40 feet and increase S-23 Cats C and D visibility 1/8 SM. VDP NA with Taunton altimeter setting. Helicopter visibility reduction below 3/4 SM NA. For inop MALSRL increase S-23 Cat A/B visibility 1/4 mile and Cat C/D visibility 3/8 mile. For inop MALSRL when using Taunton altimeter setting, increase S-23 Cat A/B visibility 1/4 mile.

MALSRL 

**MISSED APPROACH:** Climb to 2100 on I-EWB SW course to BONNI/I-EWB 11.4 DME and hold.

ATIS <b>126.85</b>	PROVIDENCE APP CON* <b>128.7 269.525</b>	NEW BEDFORD TOWER* <b>118.1 (CTAF) 0 239.0</b>	GND CON <b>121.9</b>	UNICOM <b>122.95</b>
-----------------------	---	---	-------------------------	-------------------------

## RADAR REQUIRED

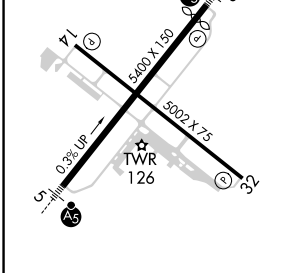


NE-1, 05 SEP 2024 to 03 OCT 2024

NE-1, 05 SEP 2024 to 03 OCT 2024

**MISSED APCH FIX**  
BONNI  
I-EWB **11.4**

ELEV 79	TDZE 78
---------	---------

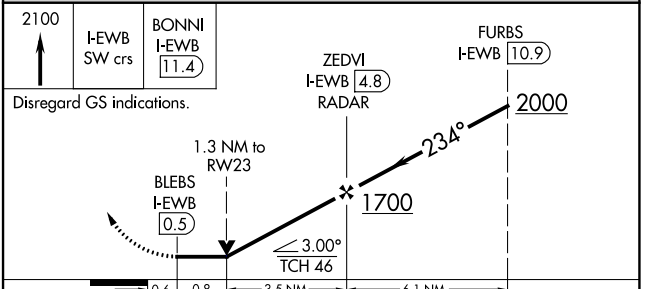


MIRL Rwy 14-32 **Ⓛ**  
HIRL Rwy 5-23 **Ⓛ**  
REIL Rwy 32 **Ⓛ**

FAF to MAP 4.3 NM

Knots	60	90	120	150	180
Min:Sec	4:18	2:52	2:09	1:43	1:26

## BACK COURSE



CATEGORY	A	B	C	D
S-23	580-3/4 502 (600-3/4)		580-1 502 (600-1)	
<b>Ⓛ</b> CIRCLING	620-1 541 (600-1)	640-1 561 (600-1)	720-1 3/4 641 (700-1 3/4)	960-3 881 (900-3)