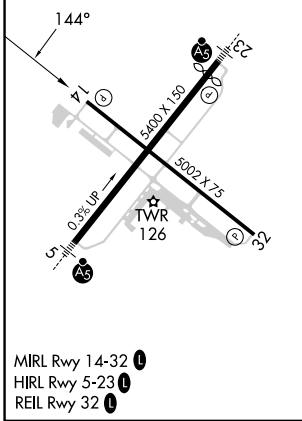
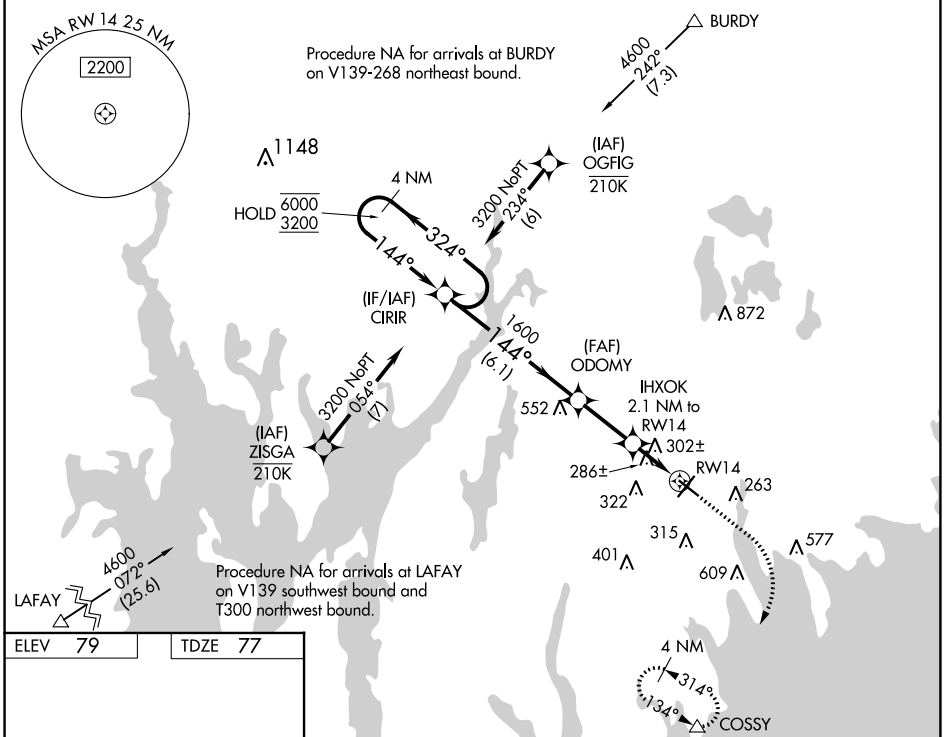


WAAS CH <b>62927</b> <b>W14A</b>	APP CRS <b>144°</b>	Rwy Idg TDZE <b>77</b> Apt Elev <b>79</b>	<b>5002</b>
--	------------------------	---	-------------

# RNAV (GPS) RWY 14

NEW BEDFORD RGNL (EWB)

RNP APCH - GPS.		<p>▼ Rwy 14 helicopter visibility reduction below 1 SM NA. Procedure NA at night. When local altimeter setting not received, use Taunton altimeter setting and increase all MDA 40 feet, and LNAV visibility Cat C ½ SM, and Circling visibility Cat C ¼ SM.</p> <p>▲ MISSED APPROACH: Climb to 600 then climbing right turn to 3000 direct COSSY and hold.</p>		
ATIS <b>126.85</b>	PROVIDENCE APP CON* <b>128.7 269.525</b>	NEW BEDFORD TOWER* <b>118.1 (CTAF) 0 239.0</b>	GND CON <b>121.9</b>	UNICOM <b>122.95</b>



ELEV 79	TDZE 77			
4 NM Holding Pattern CIRIR	Visual Segment - Obstacles.			
6000 ← 324°	600 ↑			
3200 → 144°	3000 ↘			
	COSSY ▲			
	ODOMY			
	IHXOK 2.1 NM to RWY 14			
	1600			
	780			
	6.1 NM			
	2.5 NM			
	2.1 NM			
	RWY 14			
CATEGORY	A	B	C	D
LP MDA	540-1	463 (500-1)	540-1 3/8 463 (500-1 3/8)	NA
LNAV MDA	560-1	483 (500-1)	560-1 3/8 483 (500-1 3/8)	NA
<b>C</b> CIRCLING	620-1 541 (600-1)	640-1 561 (600-1)	720-1 3/4 641 (700-1 3/4)	NA

NE-1, 05 SEP 2024 to 03 OCT 2024

NE-1, 05 SEP 2024 to 03 OCT 2024