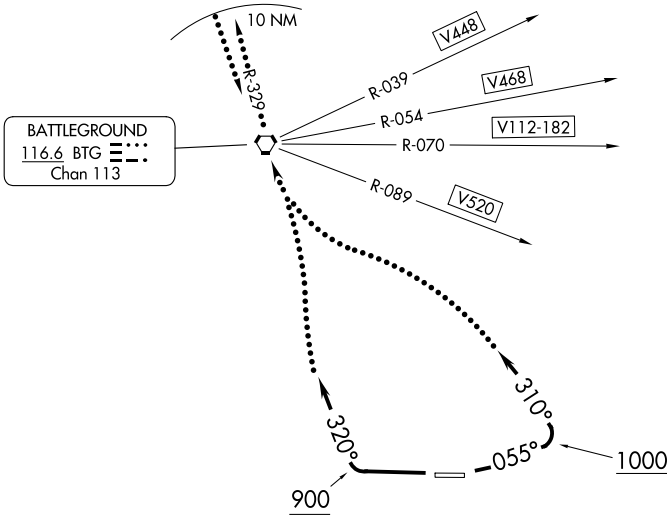


# BLUE LAKE THREE DEPARTURE

AL-649 (FAA)

PORTLAND-TROUTDALE (T'D)  
PORTLAND, OREGON

CTAF 120.9



NOTE: Rwy 7 requires a minimum climb gradient of 420' per NM to 4000'.  
Rwy 25 requires a minimum climb of 310' per NM to 2000'.

NOTE: Chart not to scale.

## DEPARTURE ROUTE DESCRIPTION

**TAKEOFF RUNWAY 7:** Climb via heading 055° to 1000', then turn left to 310° or as assigned.

**TAKEOFF RUNWAY 25:** Climb runway heading to 900', then turn right to 320° or as assigned.

**LOST COMMUNICATIONS:** Proceed direct to BTG VORTAC. Continue climb on the BTG R-329 within 10 NM to cross BTG VORTAC at or above: NE-bound V448, 9400'; NE-bound V468, 4500'; E-bound V112, V182, V520, 4700'; for non airways BTG R-355 CW BTG R-120, 8800'; all others, 2500'.

**ALTERNATE LOST COMMUNICATIONS PROCEDURE:** When BTG VORTAC is out of service: if no contact with ATC leaving 3000', continue climb to assigned altitude and proceed direct to UBG VOR/DME, thence via assigned route.

# BLUE LAKE THREE DEPARTURE

04FEB93

PORTLAND, OREGON  
PORTLAND-TROUTDALE (T'D)

NW-1, 05 SEP 2024 to 03 OCT 2024

NW-1, 05 SEP 2024 to 03 OCT 2024