

RNAV (GPS)-A

PORTLAND-TROUTDALE (T'D)

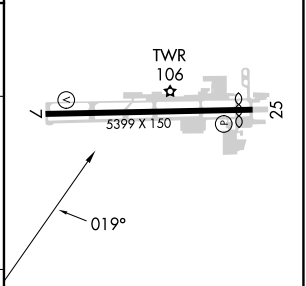
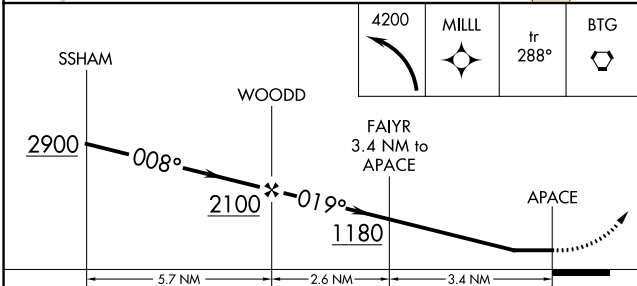
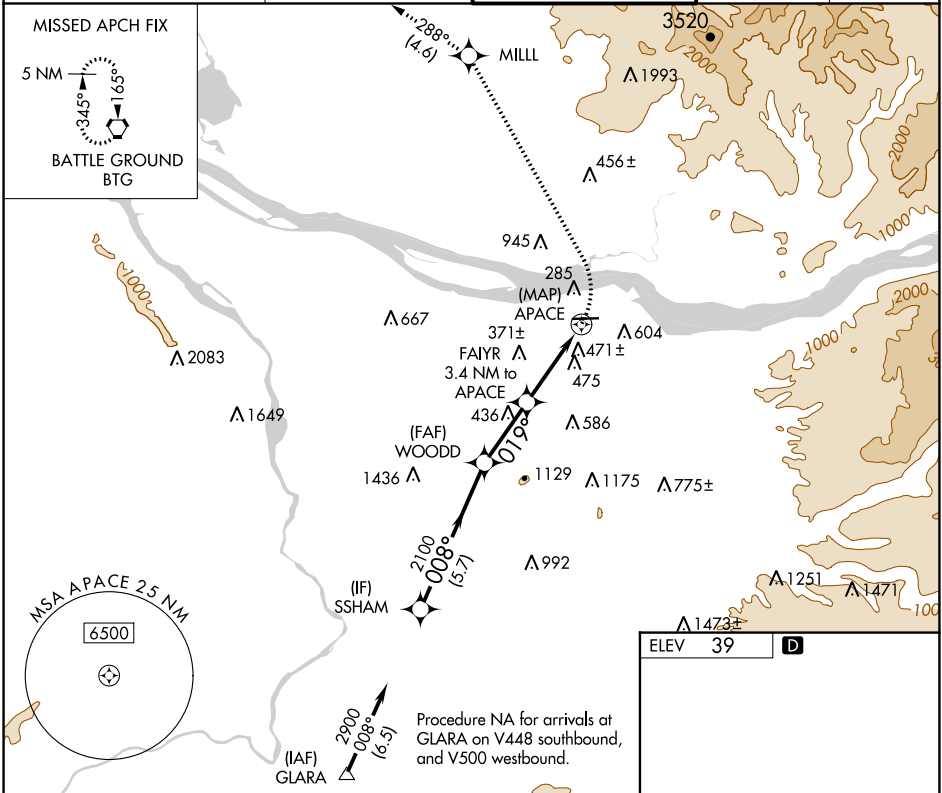
APP CRS 019°	Rwy Idg TDZE Apt Elev	N/A N/A 39
------------------------	-----------------------------	-------------------------

▽ DME/DME RNP-0.3 NA. When local altimeter setting not received, use Portland Intl altimeter setting and increase all MDA 40 feet.

▲

MISSED APPROACH: Climbing left turn to 4200 direct MILL and on track 288° to BTG VORTAC and hold, continue climb-in-hold to 4200.

ATIS 135.625	PORTLAND APP CON 124.35 299.2	TROUTDALE TOWER * 120.9 (CTAF) 254.3	GND CON 121.8	UNICOM 122.95
------------------------	---	--	-------------------------	-------------------------



CATEGORY	A	B	C	D
C CIRCLING	1000-1¼ 961 (1000-1¼)	1040-1½ 1001 (1100-1½)	1300-3	1261 (1300-3)

REIL Rwy 7 and 25
MIRL Rwy 7-25 **⬇**

NW-1, 05 SEP 2024 to 03 OCT 2024

NW-1, 05 SEP 2024 to 03 OCT 2024