

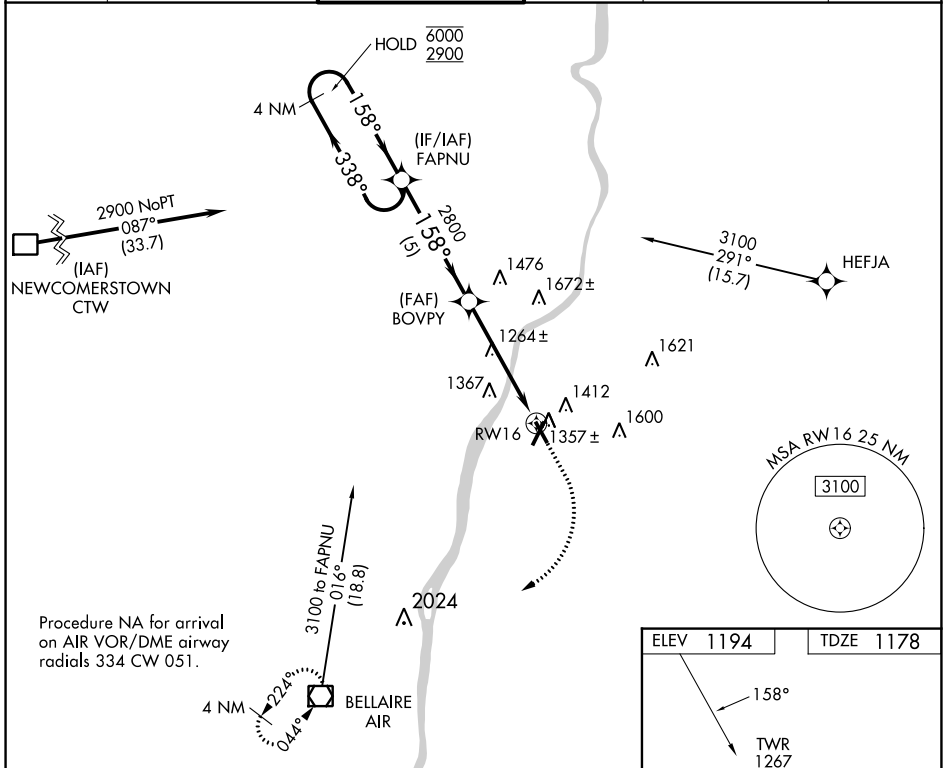
WAAS CH 99640 W16A	APP CRS 158°	Rwy Idg TDZE Apt Elev	4499 1178 1194
--	------------------------	-----------------------------	---

RNAV (GPS) RWY 16

WHEELING OHIO COUNTY (HLG)

RNP APCH.		MISSED APPROACH: Climb to 1700 then climbing right turn to 3100 direct AIR VOR/DME and hold.			
-----------	--	--	--	--	--

ASOS 127.375	PITTSBURGH APP CON 125.275 285.575	WHEELING TOWER ★ 118.1 (CTAF) 0 257.8	GND CON 121.75	CLNC DEL 125.275 (when twr closed)	UNICOM 122.95
------------------------	--	---	--------------------------	---	-------------------------



NE-4, 05 SEP 2024 to 03 OCT 2024

NE-4, 05 SEP 2024 to 03 OCT 2024

4 NM Holding Pattern FAPNU		1700	3100	AIR
6000 ← 338°		BOVPY		
2900 → 158°		1 NM to RW16		
158°		RW16		
2800		3.00° TCH 40		
5 NM		4 NM		
1 NM		1 NM		
CATEGORY	A	B	C	D
LP MDA	1520-1		342 (400-1)	
LNAV MDA	1620-1	442 (500-1)	1620-1 ³ / ₈	442 (500-1 ³ / ₈)
CIRCLING	1720-1 526 (600-1)	1740-1 546 (600-1)	1920-2 726 (800-2)	1920-2 ¹ / ₄ 726 (800-2 ¹ / ₄)

