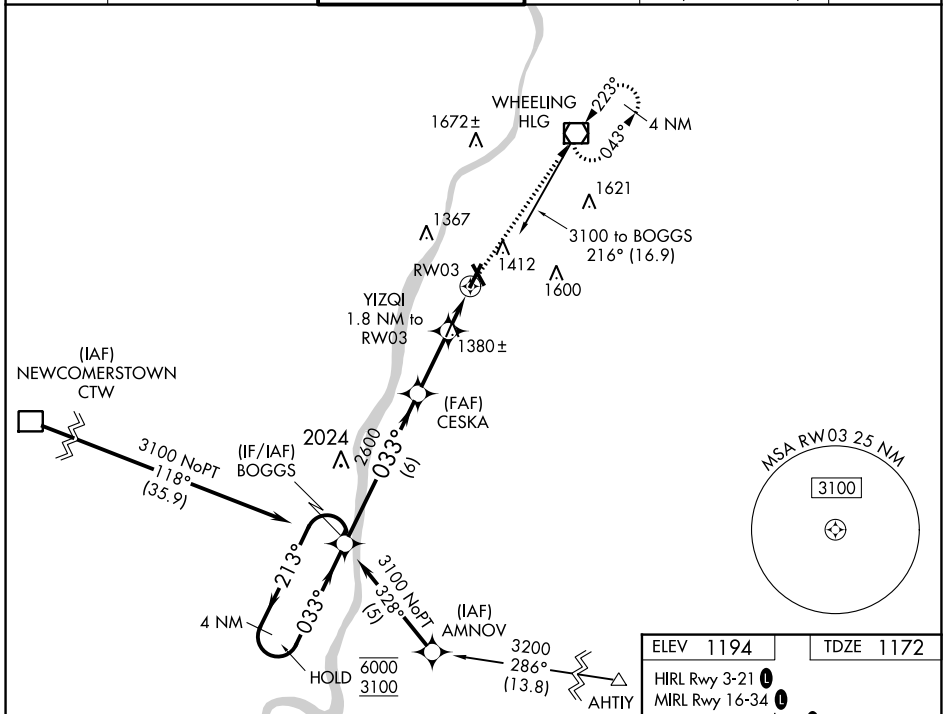


WAAS CH <b>90513</b> <b>W03A</b>	APP CRS <b>033°</b>	Rwy Idg TDZE Apt Elev	<b>5002</b> <b>1172</b> <b>1194</b>
--	------------------------	-----------------------------	---

# RNAV (GPS) RWY 3

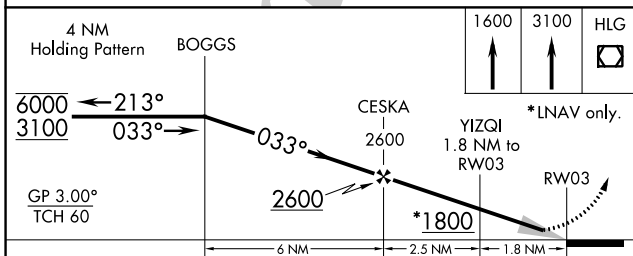
WHEELING OHIO COUNTY (HLG)

RNP APCH.		WHEELING TOWER * <b>118.1 (CTAF) 0257.8</b>		GND CON <b>121.75</b>	CLNC DEL <b>125.275</b> (when twr closed)	UNICOM <b>122.95</b>
<p>▼ Inoperative table does not apply to LPV and LNAV/VNAV all Cats and LNAV Cats A/B. For uncompensated Baro-VNAV systems, LNAV/VNAV NA below -17°C or above 54°C.</p> <p>▲</p>		<p>MAISF</p>		<p>MISSED APPROACH: Climb 1600 then climb to 3100 direct HLG VOR/DME and hold, continue climb-in-hold to 3100.</p>		

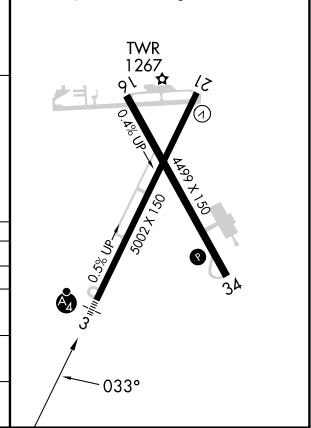


NE-4, 05 SEP 2024 to 03 OCT 2024

NE-4, 05 SEP 2024 to 03 OCT 2024



ELEV 1194	TDZE 1172
HIRL Rwy 3-21	MIRL Rwy 16-34
REIL Rwy 21 and 34	



CATEGORY	A	B	C	D
LPV DA		1372/50	200 (200-1)	
LNAV/VNAV DA		1439/50	267 (300-1)	
LNAV MDA	1640/55	468 (500-1)	1640/60	468 (500-1½)
CIRCLING	1720-1 526 (600-1)	1740-1 546 (600-1)	1920-2 726 (800-2)	1920-2¼ 726 (800-2¼)