

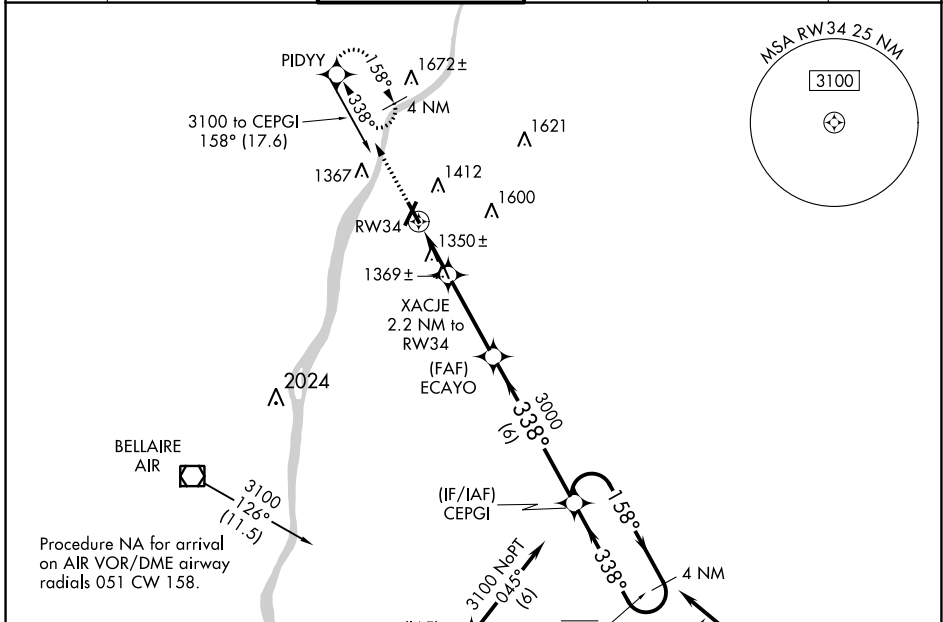
WAAS CH <b>69540</b> <b>W34A</b>	APP CRS <b>338°</b>	Rwy Idg <b>4499</b> TDZE <b>1191</b> Apt Elev <b>1194</b>
--	------------------------	---

# RNAV (GPS) RWY 34

WHEELING OHIO COUNTY (HLG)

RNP APCH.	MISSED APPROACH: Climb to 3300 direct PIDYY and hold, continue climb-in-hold to 3300.			
-----------	--	--	--	--

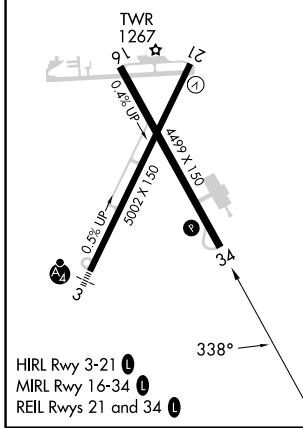
ASOS <b>127.375</b>	PITTSBURGH APP CON <b>125.275 285.575</b>	WHEELING TOWER ★ <b>118.1 (CTAF) 0257.8</b>	GND CON <b>121.75</b>	CLNC DEL <b>125.275</b> (when twr closed)	UNICOM <b>122.95</b>
------------------------	--	--	--------------------------	---	-------------------------



NE-4, 05 SEP 2024 to 03 OCT 2024

NE-4, 05 SEP 2024 to 03 OCT 2024

ELEV <b>1194</b>	TDZE <b>1191</b>
------------------	------------------



3300	PIDYY	CEPGI 4 NM Holding Pattern	
XACJE 2.2 NM to RW34	ECAYO	158° → 6000	← 338° 3100
1.2 NM to RW34	≤ 3.00° TCH 42	3000	
1.2	1	3.4 NM	6 NM
CATEGORY	A	B	C D
LP MDA	1620-1	429 (500-1)	1620-1¼ 429 (500-1¼)
LNAV MDA	1740-1	549 (600-1)	1740-1½ 549 (600-1½)
CIRCLING	1740-1	546 (600-1)	1920-2 726 (800-2) 1920-2¼ 726 (800-2¼)