

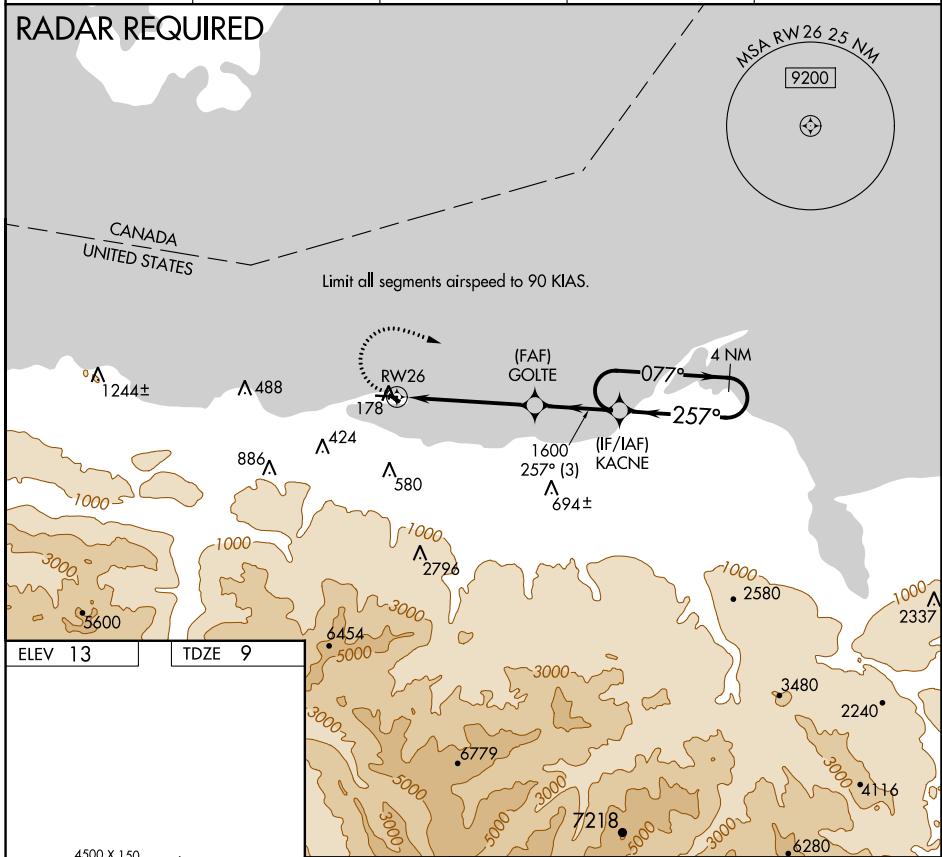
APP CRS	Rwy Idg	<b>4500</b>
<b>257°</b>	TDZE	<b>9</b>
	Apt Elev	<b>13</b>

# COPTER RNAV (GPS) RWY 26

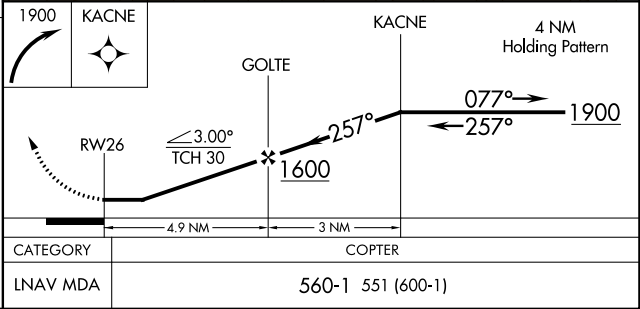
PORT ANGELES CGAS (NOW)

<b>▼</b>	Use William R Fairchild Intl altimeter setting; when not received, use Whidbey Island NAS (Autl Fld) altimeter setting and increase MDA 120 feet. DME/DME RNP-0.3 NA. Prior permission required.	<b>MISSED APPROACH:</b> Climbing right turn to 1900 direct KACNE and hold.
----------	--	--

AWOS-3P <b>118.325</b>	WHIDBEY APP CON <b>118.2 285.65</b>	PORT ANGELES AIR <b>127.7 345.0</b>	CLNC DEL <b>124.15</b>	UNICOM <b>122.975</b> (CTAF)
---------------------------	--	--	---------------------------	---------------------------------



ELEV 13	TDZE 9
MIRL Rwy 8-26	



NW-1, 05 SEP 2024 to 03 OCT 2024

NW-1, 05 SEP 2024 to 03 OCT 2024