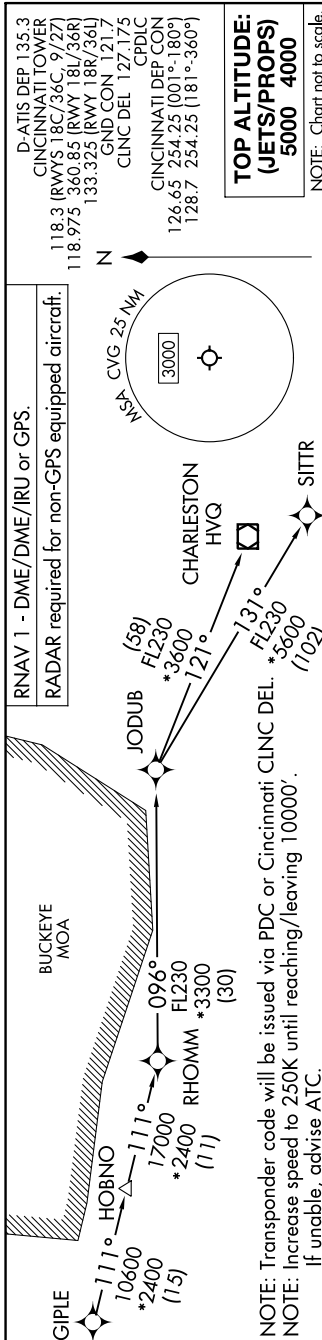


GIPLE SEVEN DEPARTURE (RNAV) Transition Route

SE-1, 05 SEP 2024 to 03 OCT 2024



D-ATIS DEP 135.3  
 CINCINNATI TOWER  
 118.3 (RWYS 18C/36C, 9/27)  
 118.975 360.85 (RWY 18L/36R)  
 133.325 (RWY 18R/36L)  
 GND CON 121.7  
 CLNC DEL 127.175  
 CPDC  
 CINCINNATI DEP CON  
 126.65 254.25 (001°-180°)  
 128.7 254.25 (181°-360°)

**TOP ALTITUDE:  
 (JETS/PROPS)  
 5000 4000**

NOTE: Chart not to scale.

DEPARTURE ROUTE DESCRIPTION

**TAKEOFF RUNWAY 9:** Climb on heading 096° to 1400, then direct KINNG, then on track 122° to GIPLE, thence ...  
**TAKEOFF RUNWAY 18L:** Climb on heading 171° to intercept course 171° to LASNG, then on track 108° to CODKO, then on track 105° to GIPLE, thence ...  
**TAKEOFF RUNWAY 18C:** Climb on heading 186° to 1400, then direct FLOEE, then on track 105° to CODKO, then on track 105° to GIPLE, thence ...  
**TAKEOFF RUNWAY 18R:** Climb on heading 186° to intercept course 202° to FANSA, then on track 158° to HIPAS, then on track 096° to GIPLE, thence ...  
**TAKEOFF RUNWAY 27:** Climb on heading 276° to 1400, then direct BONLE, then on track 189° to REKUE, then on track 149° to WIMDI, then on track 079° to GIPLE, thence ...  
**TAKEOFF RUNWAY 36L:** Climb on heading 006° to intercept course 325° to RORFE, then on track 053° to SUVBE, then on track 121° to HOMIX, then on track 137° to GIPLE, thence ...  
**TAKEOFF RUNWAY 36C:** Climb on heading 006° to intercept course 325° to RORFE, then on track 053° to SUVBE, then on track 121° to HOMIX, then on track 137° to GIPLE, thence ...  
**TAKEOFF RUNWAY 36R:** Climb on heading 006° to 1400, then direct HAGSS, then on track 094° to HOMIX, then on track 137° to GIPLE, thence ...

...turbojets: maintain 5000, all other aircraft: maintain 4000. Expect clearance to filed altitude within ten minutes after departure.

CHARLESTON TRANSITION (GIPLE7.HVQ):  
 JODUB TRANSITION (GIPLE7.JODUB):  
 SITTR TRANSITION (GIPLE7.SITTR):

SE-1, 05 SEP 2024 to 03 OCT 2024