

WAAS CH <b>49099</b> <b>W36A</b>	APP CRS <b>006°</b>	Rwy Idg TDZE Apt Elev	<b>8000</b> <b>873</b> <b>896</b>
----------------------------------------	------------------------	-----------------------------	-----------------------------------------

# RNAV (GPS) Y RWY 36L

CINCINNATI/NORTHERN KENTUCKY INTL (CVG)

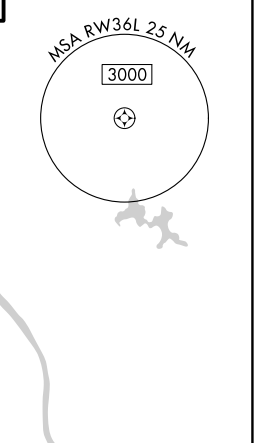
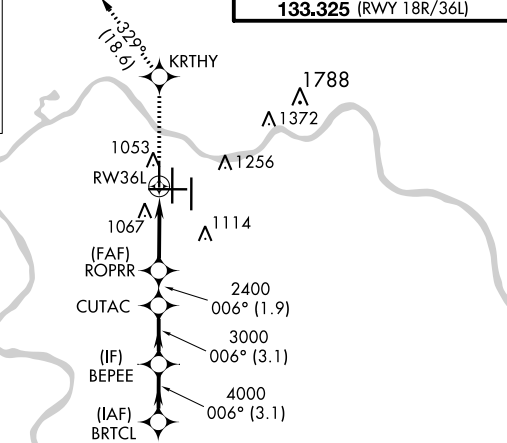
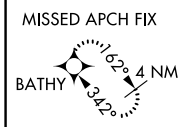
RNP APCH - GPS.

▼ For uncompensated Baro-VNAV systems, LNAV/VNAV NA below -16°C or above 54°C. Simultaneous approach authorized with Rwy 36C/R. LNAV procedure NA during simultaneous operations. Use of FD or AP providing RNAV track guidance required during simultaneous operations.

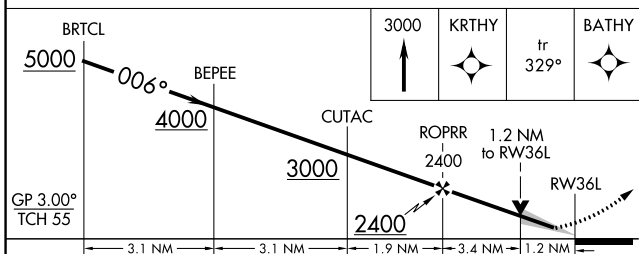
ALSF-2  
A

MISSED APPROACH: Climb to 3000 direct KRTHY and on 329° track to BATHY and hold.

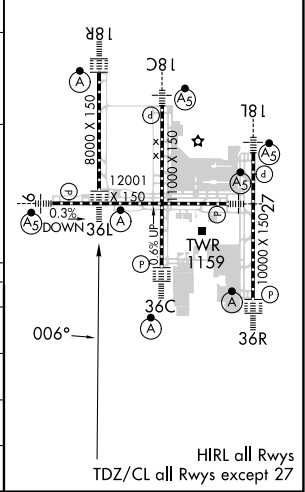
D-ATIS		CINCINNATI APP CON		CINCINNATI TOWER		GND CON	CLNC DEL	CPDLC
ARR	DEP	<b>119.7</b>	<b>363.15</b> (090°-269°)	<b>118.975</b>	<b>360.85</b> (RWY 18L/36R)	<b>121.7</b>	<b>127.175</b>	
<b>134.375</b>	<b>135.3</b>	<b>123.875</b>	<b>363.15</b> (270°-089°)	<b>118.3</b>	(RWYS 18C/36C, 09/27)			
				<b>133.325</b>	(RWY 18R/36L)			



Procedure NA for arrivals at FLM VOR/DME on V517 southeast bound.



ELEV 896	D	TDZE 873
----------	---	----------



CATEGORY	A	B	C	D
LPV DA		1073/18	200 (200-½)	
LNAV/VNAV DA		1383/55	510 (500-1)	
LNAV MDA	1300/24	427 (500-½)	1300/40	427 (500-¾)
CIRCLING	1460-1	564 (600-1)	1560-1¾ 664 (700-¾)	1560-2 664 (700-2)

SE-1, 05 SEP 2024 to 03 OCT 2024

SE-1, 05 SEP 2024 to 03 OCT 2024