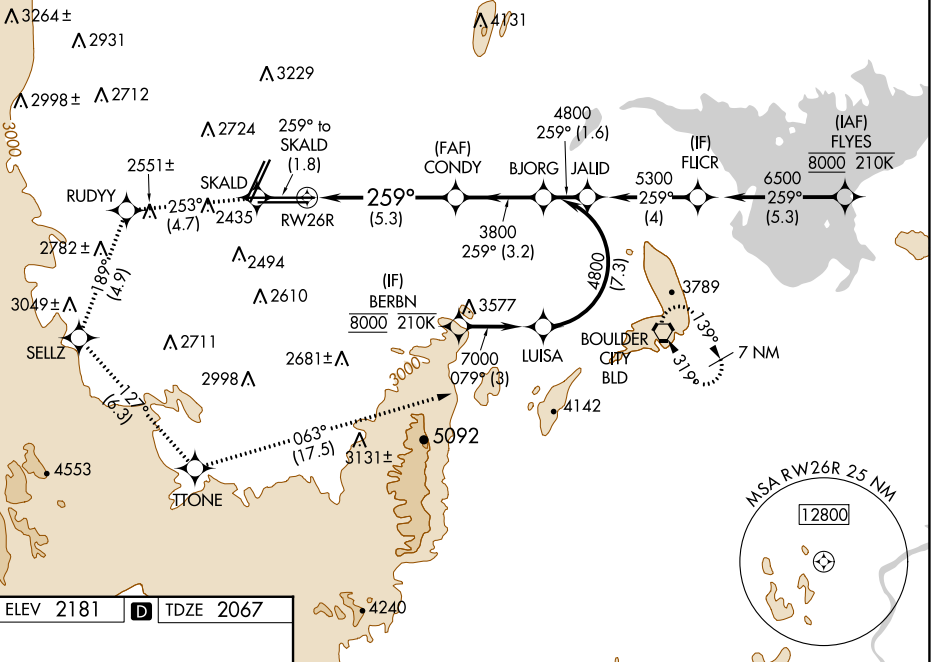


APP CRS	Rwy Idg	12638
259°	TDZE	2067
	Apt Elev	2181

RNAV (RNP) RWY 26R

HARRY REID INTL (LAS)

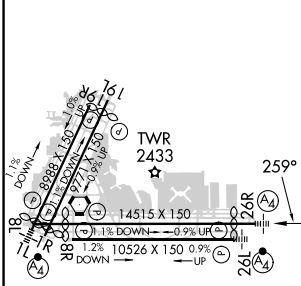
RNP AR APCH-GPS.		MALS	MISSED APPROACH: Cimb to 7000 on the RNAV missed approach route to BLD VORTAC and hold. * Missed approach requires minimum climb of 230 feet per NM to 3200.			
For uncompensated Baro-VNAV systems, procedure NA below -1°C or above 54°C.						
D-ATIS	LAS VEGAS APP CON	LAS VEGAS TOWER		GND CON	CLNC DEL	CPDLC
132.4	125.025 379.15 (West) 119.775 282.2 (East)	118.75 257.8 (Rwy 1L/19R, 1R/19L) 119.9 257.8 (Rwy 8L/26R, 8R/26L)		121.1 270.8 E of 1R/19L 121.9 254.3 W of 1L/19R	118.0	



SW-4, 05 SEP 2024 to 03 OCT 2024

SW-4, 05 SEP 2024 to 03 OCT 2024

ELEV 2181	D	TDZE 2067
-----------	----------	-----------



7000	SKALD	RUDYY	SELLZ	TTONE	BLD
↑	◆	tr 253°	◆	tr 127°	tr 063°
fr 259°					
VGSI and RNAV glidepath not coincident (VGSI Angle 3.00/TCH 84). See planview for multiple IF locations.					
RW26R		CONDY	BJORG		
		3800	4800		
		259°			
		3800			
		-5.3 NM		3.2 NM	
CATEGORY	A	B	C	D	
RNP 0.30 DA*	2457-7/8		390 (300-7/8)		
RNP 0.30 DA	2508-1		441 (400-1)		
AUTHORIZATION REQUIRED					

MIRL Rwy 1R-19L
REIL Rwy 1R, 8R, 19L and 19R
HIRL Rwy 1L-19R, 8L-26R and 8R-26L