

LOC/DME H-GU 109.15 Chan 28(Y)	APP CRS 172°	Rwy Idg 9020 TDZE 4457 Apt Elev 4457
--	------------------------	---

ILS or LOC/DME RWY 17

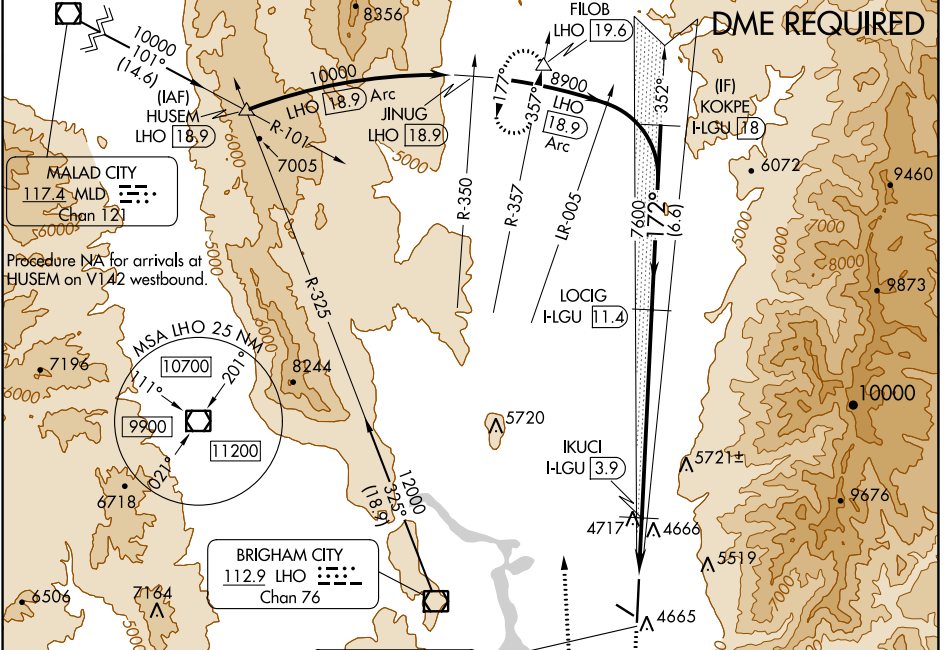
LOGAN-CACHE (L-GU)

NA Circling NA east of Rwy 17-35.
NA Circling Rwy 10, 28 NA at night.
-15°C Rwy 17 helicopter visibility reduction below 3/4 SM NA.

MALSR


MISSED APPROACH: Climb to 5800 then climbing right turn to 12000 on heading 345° and on LHO VOR/DME R-357 to FIOB INT/LHO 19.6 DME and hold, continue climb-in-hold to 12000.

ASOS 135.275	SALT LAKE CENTER 127.7 354.125	UNICOM 122.8 (CTAF)
------------------------	--	-------------------------------

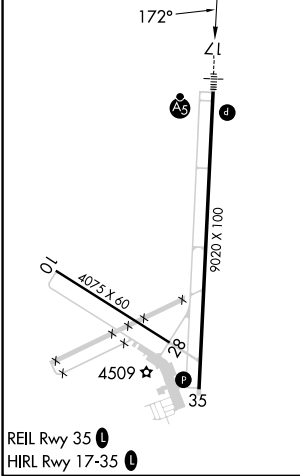


SW-4, 05 SEP 2024 to 03 OCT 2024

SW-4, 05 SEP 2024 to 03 OCT 2024

ELEV 4457	D	TDZE 4457
-----------	----------	-----------

LOCALIZER, 109.15
 H-GU
 Chan 28(Y)



5800 12000 LHO FIOB Use I-LGU DME when on localizer course.

↑ hdg 345° R-357 △

VGSI and ILS glidepath not coincident (VGSI Angle 3.00/TCH 45).

I-LGU 1.7 H-LGU 3.3 IKUCI I-LGU 3.9 LOCIG H-GU 11.4 KOKPE H-GU 18

7600 8900

5220 7600

GS 3.00° TCH 50

1.6 NM 0.6 NM 7.5 NM 6.6 NM

CATEGORY	A	B	C	D
S-ILS 17	4771-3/4		314 (400-3/4)	
S-LOC 17	5020-3/4	563 (600-3/4)	5020-1/4	563 (600-1/4)
C CIRCLING	5020-1	563 (600-1)	5080-1/4 623 (700-1/4)	5080-2 623 (700-2)