

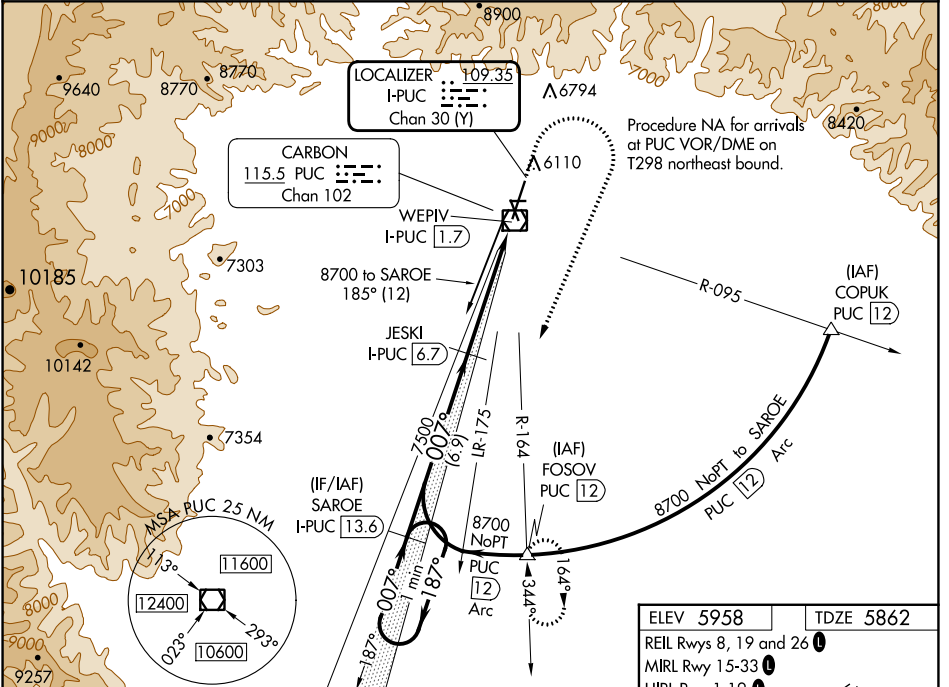
LOC/DME I-PUC <b>109.35</b> Chan 30 (Y)	APP CRS <b>007°</b>	Rwy Ldg TDZE <b>8316</b> <b>5862</b> Apt Elev <b>5958</b>
---	------------------------	---

# ILS or LOC RWY 1

CARBON COUNTY RGNL/BUCK DAVIS FLD (PUC)

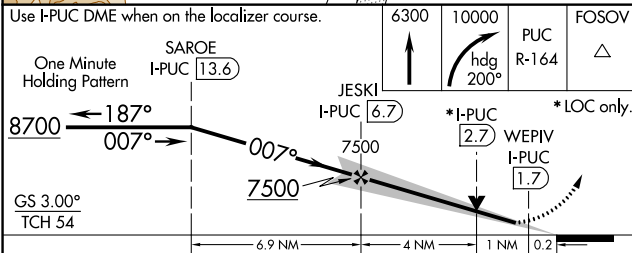
DME required for procedure entry. DME required.		MALSF	MISSED APPROACH: Climb to 6300 then climbing right turn to 10000 on heading 200° and on PUC VOR/DME R-164 to FOSOV/PUC 12 DME and hold, continue climb-in-hold to 10000. #Missed approach requires minimum climb of 339 feet per NM to 7100.
NA	Circling NA at night. For inoperative ALS, increase S-ILS 1 all Cats visibility to 7/8 SM. Inoperative table does not apply to S-ILS 1# all Cats.		

ASOS <b>135.425</b>	SALT LAKE CENTER <b>133.9 370.85</b>	UNICOM <b>122.8 (CTAF) 0</b>
------------------------	---	---------------------------------

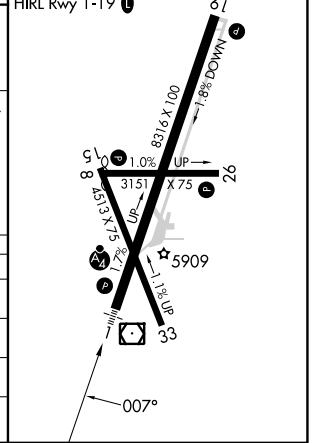


SW-4, 05 SEP 2024 to 03 OCT 2024

SW-4, 05 SEP 2024 to 03 OCT 2024



ELEV 5958	TDZE 5862
REIL Rwys 8, 19 and 26	
MIRL Rwy 15-33	
HIRL Rwy 1-19	



CATEGORY	A	B	C	D
S-ILS 1#		6062-3/4	200 (200-3/4)	
S-ILS 1		6127-3/4	265 (200-3/4)	
S-LOC 1		6240-3/4	378 (300-3/4)	
CIRCLING	6660-1 702 (800-1)	6860-1 1/4 902 (1000-1 1/4)	7120-3 1162 (1200-3)	NA