

|  |                        |                             |   |
|--|------------------------|-----------------------------|---|
| WAAS<br>CH <b>58207</b><br><b>W25A</b> | APP CRS<br><b>252°</b> | Rwy Idg<br>TDZE<br>Apt Elev | <b>4872</b><br><b>659</b><br><b>684</b> |
|--|------------------------|-----------------------------|---|

# RNAV (GPS) RWY 25

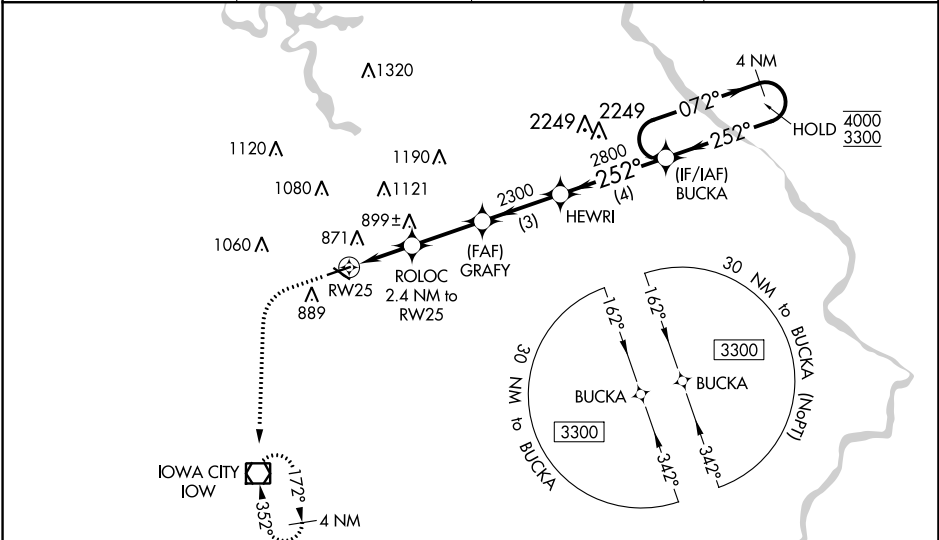
IOWA CITY MUNI (IOW)

RNP APCH - GPS.

**⚠** Circling Rwy 12 NA at night. Baro-VNAV and VDP NA when using Cedar Rapids altimeter setting. Rwy 25 helicopter visibility reduction below  $\frac{3}{4}$  SM NA. For uncompensated Baro-VNAV systems, LNAV/VNAV NA below -23°C or above 54°C. When local altimeter setting not received, use Cedar Rapids altimeter setting: increase LPV DA to 973 and all visibilities  $\frac{1}{8}$  SM, increase LNAV/VNAV DA to 1214 feet and all visibilities  $\frac{1}{4}$  SM; increase all MDAs 80 feet and visibility Cats C/D  $\frac{1}{4}$  SM.

MISSED APPROACH: Climb to 1200 then climbing left turn to 2600 direct IOW VOR/DME and hold, continue climb-in-hold to 2600.

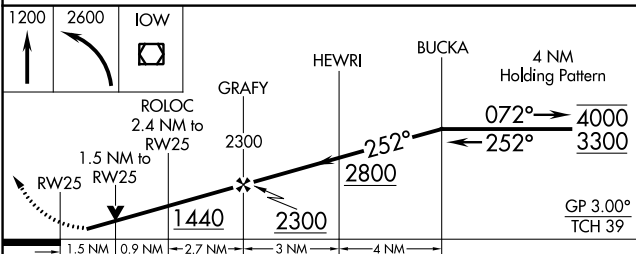
|                        |   |                           |                                 |
|------------------------|---|---------------------------|---------------------------------|
| ASOS<br><b>128,075</b> | CEDAR RAPIDS APP CON*<br><b>119.7 266.8</b> | CLNC DEL<br><b>119.05</b> | UNICOM<br><b>122.8 (CTAF) 1</b> |
|------------------------|---|---------------------------|---------------------------------|



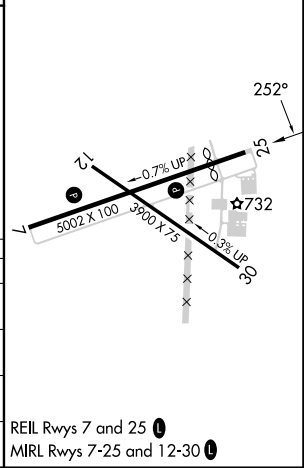
NC-3, 05 SEP 2024 to 03 OCT 2024

NC-3, 05 SEP 2024 to 03 OCT 2024

|          |                   |
|----------|-------------------|
| ELEV 684 | <b>D</b> TDZE 659 |
|----------|-------------------|



| CATEGORY          | A                     | B                     | C  | D  |
|-------------------|-----------------------|-----------------------|--|--|
| LPV DA            |                       | 909- $\frac{3}{4}$    | 250 (300- $\frac{3}{4}$ )                          |  |
| LNAV/VNAV DA      |                       | 1150-1 $\frac{3}{8}$  | 491 (500-1 $\frac{1}{8}$ )                         |  |
| LNAV MDA          | 1160-1                | 501 (500-1)           | 1160-1 $\frac{3}{8}$                               | 501 (500-1 $\frac{1}{8}$ )                         |
| <b>C</b> CIRCLING | 1220-1<br>536 (600-1) | 1240-1<br>556 (600-1) | 1440-2 $\frac{1}{4}$<br>756 (800-2 $\frac{1}{4}$ ) | 1440-2 $\frac{1}{2}$<br>756 (800-2 $\frac{1}{2}$ ) |



REIL Rws 7 and 25 **1**  
MIRL Rws 7-25 and 12-30 **1**