

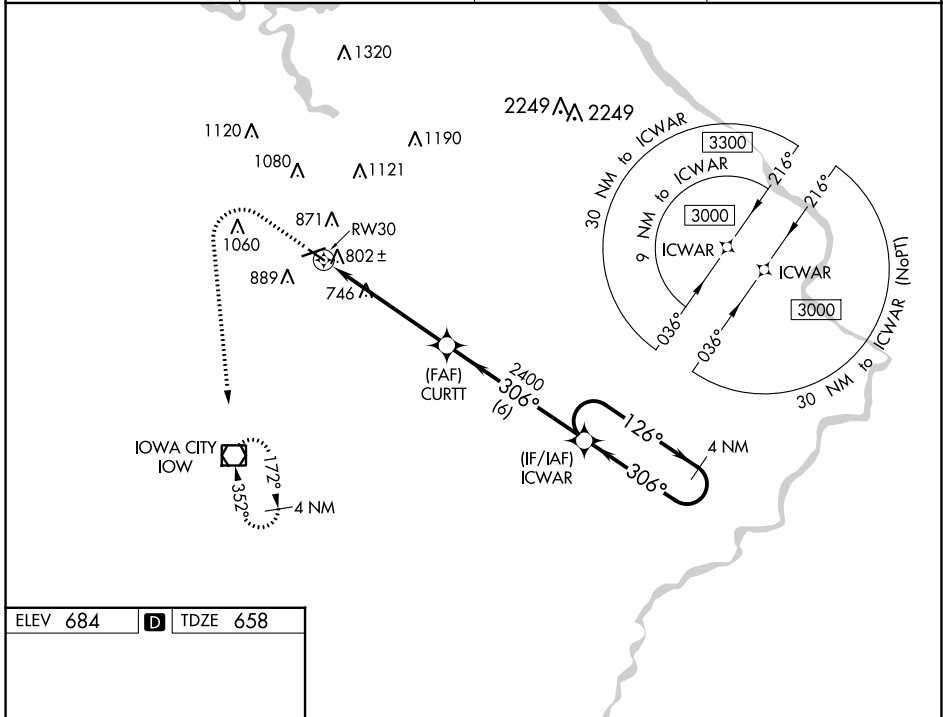
WAAS CH 86841 W30A	APP CRS 306°	Rwy Idg TDZE 658 Apt Elev 684
--	------------------------	---

RNAV (GPS) RWY 30

IOWA CITY MUNI (IOW)

RNP APCH - GPS.	MISSED APPROACH: Climb to 1100 then climbing left turn to 3000 direct IOW VOR/DME and hold.
<p>⚠ Circling Rwy 12 NA at night. Rwy 30 helicopter visibility reduction below ¼ SM NA. When local altimeter setting not received, use Cedar Rapids altimeter setting and increase all MDA 80 feet, LP Cat C and D visibility ½ SM, LNAV and Circling Cat C and D visibility ¼ SM.</p>	

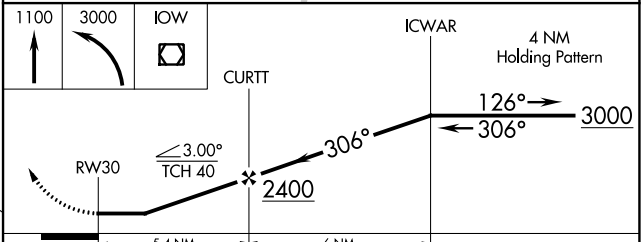
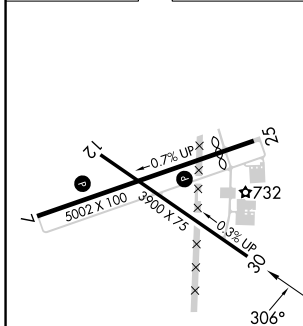
ASOS 128.075	CEDAR RAPIDS APP CON * 119.7 266.8	CLNC DEL 119.05	UNICOM 122.8 (CTAF) 0
------------------------	--	---------------------------	---------------------------------



NC-3, 05 SEP 2024 to 03 OCT 2024

NC-3, 05 SEP 2024 to 03 OCT 2024

ELEV 684	D	TDZE 658
----------	----------	----------



REIL Rwy 7 and 25	MIRL Rwy 7-25 and 12-30			
CATEGORY	A	B	C	D
LP MDA	1000-1 342 (400-1)			
LNAV MDA	1060-1 402 (400-1)	1060-1½ 402 (400-1½)		
C CIRCLING	1220-1 536 (600-1)	1240-1 556 (600-1)	1440-2¼ 756 (800-2¼)	1440-2½ 756 (800-2½)