

WAAS CH 65838 W12A	APP CRS 125°	Rwy Idg 5499 TDZE 3647 Apt Elev 3657
--	------------------------	---

RNAV (GPS) RWY 12

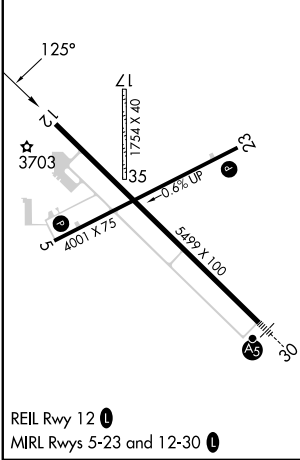
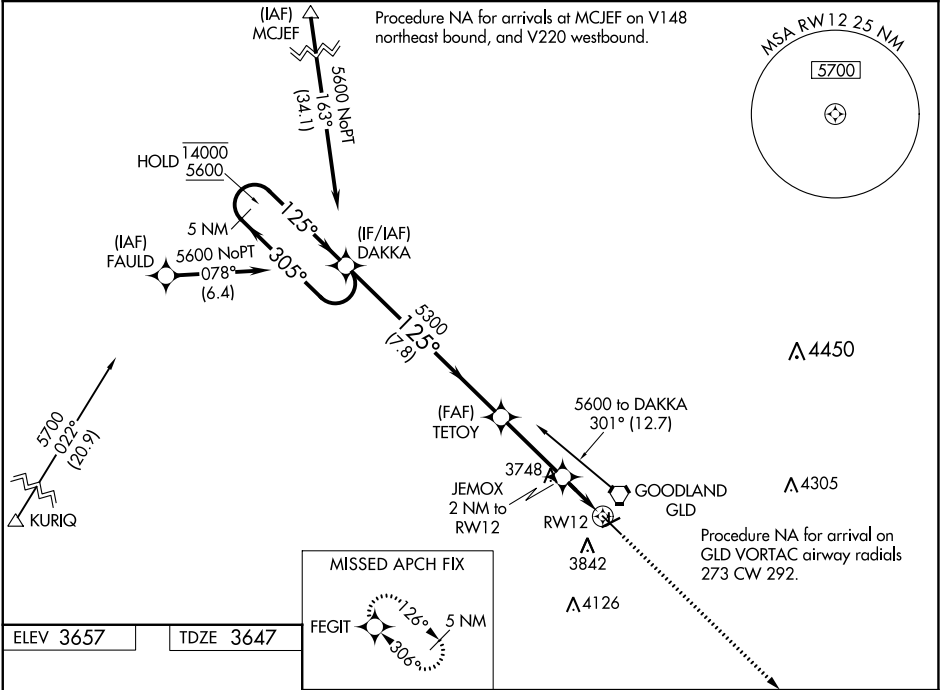
RENNER FLD/GOODLAND MUNI (GLD)

RNP APCH.

∇ Circling NA to Rwy 17 and 35. Circling NA south of Rwy 5-30.
⚠ For uncompensated Baro-VNAV systems, procedure NA below -23°C or above 54°C.

MISSED APPROACH: Climb to 5700 direct FEGIT and hold.

ASOS 121.025	DENVER CENTER 132.7 226.675	UNICOM 122.8 (CTAF) 0
------------------------	---------------------------------------	---------------------------------



	5 NM Holding Pattern	DAKKA	TETOY	JEMOX 2 NM to RW12	5700 FEGIT
	14000 5600	305° 125°	125° 5300	*1 NM to RW12	*LNAV only
	GP 3.00° TCH 40	7.8 NM	3.1 NM	1 NM	1 NM
CATEGORY	A	B	C	D	
LPV DA		3897-1	250 (300-1)		
LNAV/VNAV DA		4021-1	374 (400-1)		
LNAV MDA		4000-1	353 (400-1)		
C CIRCLING	4060-1 403 (500-1)	4120-1 463 (500-1)	4120-1½ 463 (500-1½)	4240-2 583 (600-2)	

NC-2, 05 SEP 2024 to 03 OCT 2024

NC-2, 05 SEP 2024 to 03 OCT 2024