

# TACAN Z RWY 18

TACAN DWG Chan <b>2</b>	APCH CRS <b>183°</b>	Rwy Idg TDZE Arprt Elev	<b>8025</b> <b>191</b> <b>195</b>
----------------------------	-------------------------	-------------------------------	---

[USAF]

DUKE FLD (EGLIN AF AUX NR3) (KEGI)

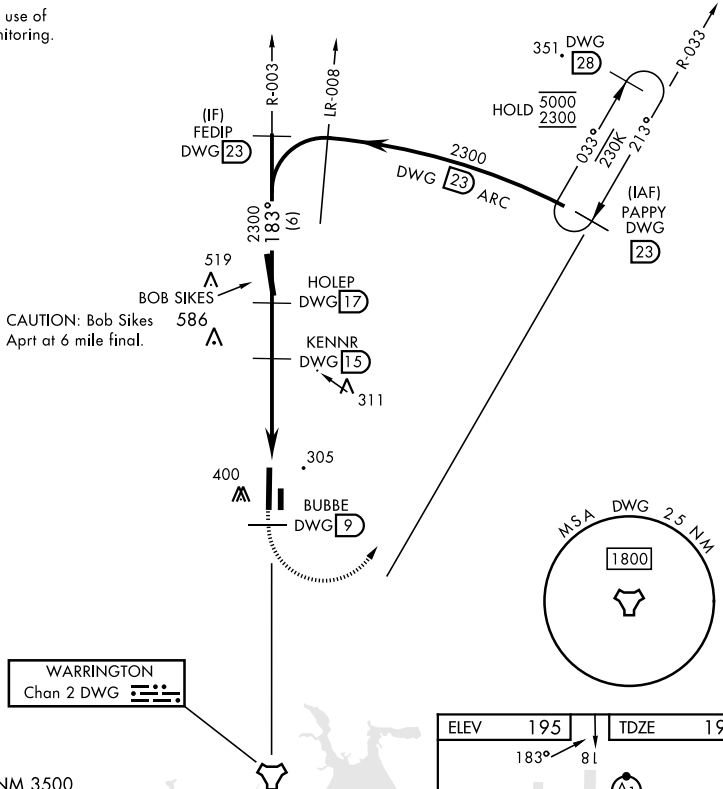
\* When ALS inop, increase RVR to 55, vis to 1 mile.

ALSF-1 

MISSED APPROACH: Climb on DWG R-003 to 9 DME (BUBBE), then climbing left turn to 2300 direct DWG R-033/23 DME (PAPPY) and hold.

ATIS ★ <b>244.575</b>	EGLIN APP CON <b>125.1 281.45</b> (271°-089°) <b>132.1 360.6</b> (090°-270°)	TOWER ★ <b>133.2 290.425</b>	GND CON <b>123.25 251.125</b>
--------------------------	--	---------------------------------	----------------------------------

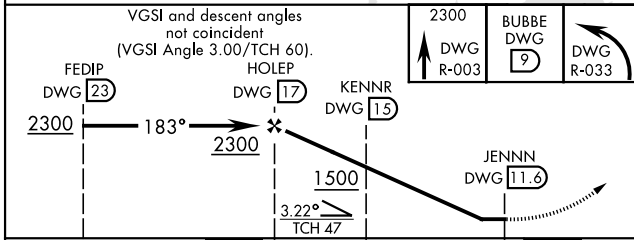
Missed Approach requires use of RNAV or ATC RADAR monitoring.



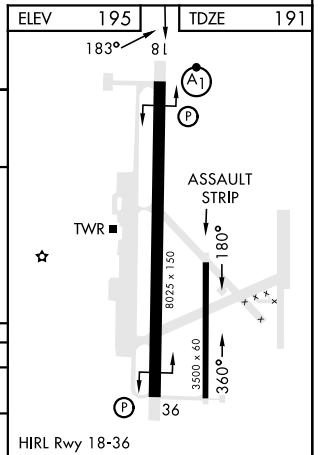
WARRINGTON  
Chan 2 DWG 

EMERG SAFE ALT 100 NM 3500

VGSI and descent angles not coincident  
(VGSI Angle 3.00/TCH 60).



CATEGORY	A	B	C	D	E
S-18*	560/24	369 (400-½)	560/35	369 (400-¾)	
CIRCLING	660-1 465 (500-1)	700-1 505 (600-1)	700-1½ 505 (600-1½)	760-2 565 (600-2)	780-2 585 (600-2)



# TACAN Z RWY 18

SE-3, 05 SEP 2024 to 03 OCT 2024

SE-3, 05 SEP 2024 to 03 OCT 2024