

VORTAC CMI	APP CRS	Rwy ldg	6502
115.75	207°	TDZE	750
Chan 104 (Y)		Apt Elev	755

# VOR RWY 22

UNIVERSITY OF ILLINOIS/WILLARD (CMI)

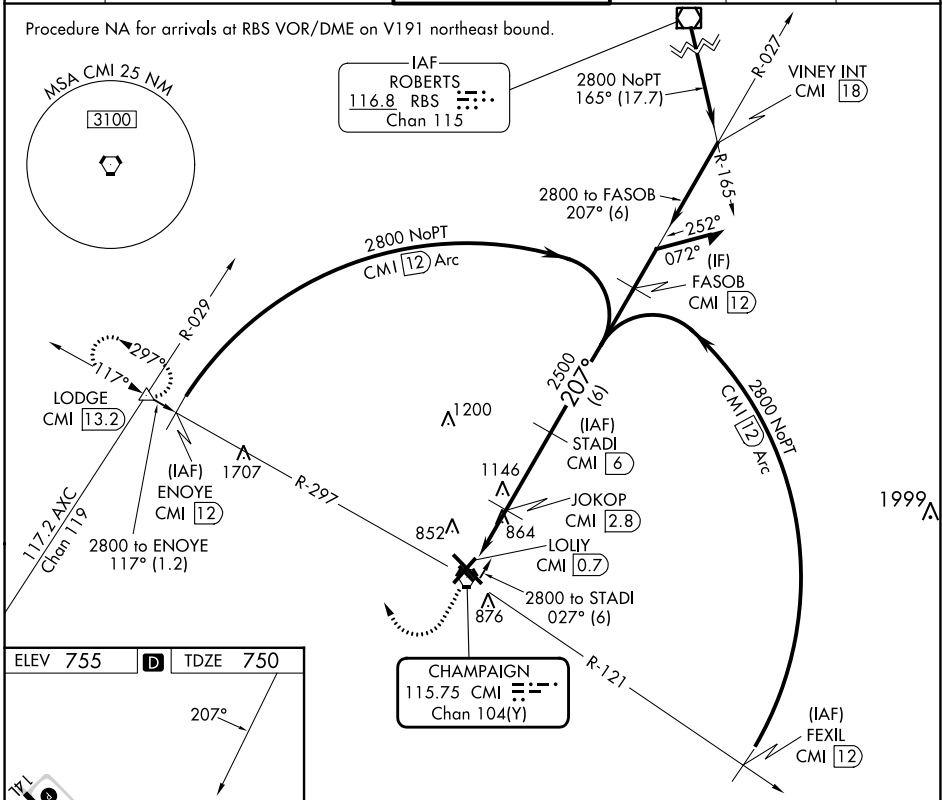
DME required.

**ASR** Rwy 22 helicopter visibility reduction below 3/4 SM NA.

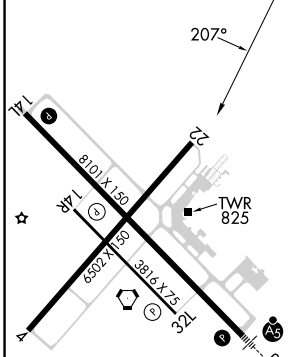
MISSED APPROACH: Climb to 2800 then right turn on heading 340° and on CMI VORTAC R-297 to LODGE INT/CMI 13.2 DME and hold.

ATIS	CHAMPAIGN APP CON *	CHAMPAIGN TOWER *	GND CON	CLNC DEL	UNICOM
124.85	121.35 285.65 (319°-138°) 132.85 290.225 (139°-318°)	120.4 (CTAF) 229.4	121.8	128.75	122.95

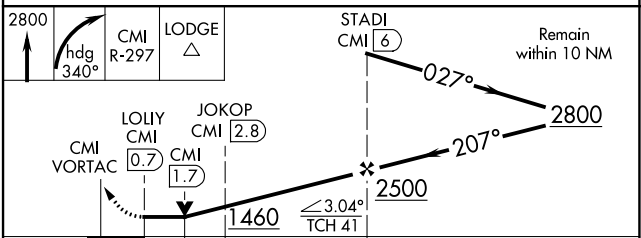
Procedure NA for arrivals at RBS VOR/DME on V191 northeast bound.



ELEV 755	D	TDZE 750
----------	---	----------



- HIRL Rwy 14L-32R 1
- MIRL Rwy 4-22 1
- MIRL Rwy 14R-32L



CATEGORY	A	B	C	D
S-22	1120-1	370 (400-1)		1120-1¼ 370 (400-1¼)
<b>C</b> CIRCLING	1240-1	485 (500-1)	1500-2¼ 745 (800-2¼)	1500-2½ 745 (800-2½)

# VOR RWY 22

EC-3, 05 SEP 2024 to 03 OCT 2024

EC-3, 05 SEP 2024 to 03 OCT 2024