

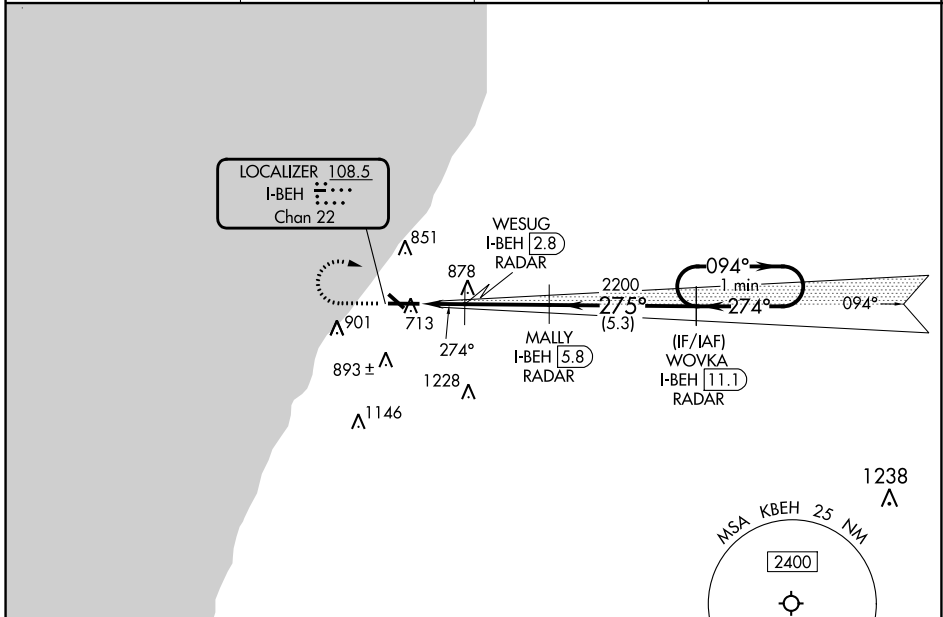
LOC I-BEH 108.5	APP CRS 274°	Rwy Idg TDZE Apt Elev	6006 649 649
Chan 22			

ILS or LOC RWY 28

SOUTHWEST MICHIGAN RGNL (BEH)

RNAV 1-GPS required.		MALSR 	MISSED APPROACH: Climb to 1300 then climbing right turn to 3000 direct WOVKA and hold.
DME Required for LOC only.			
	Circling Rwy 14 and 32 NA at night.		
	For inop ALS, increase S-LOC 28 Cat C/D visibility to 1 1/8 SM.		

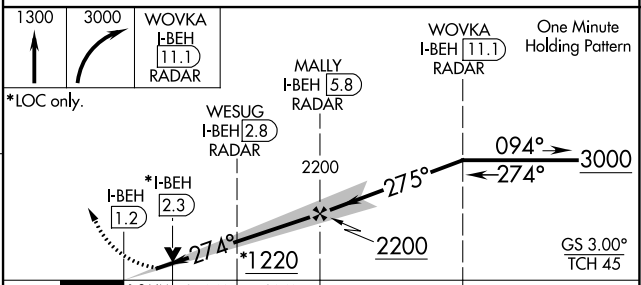
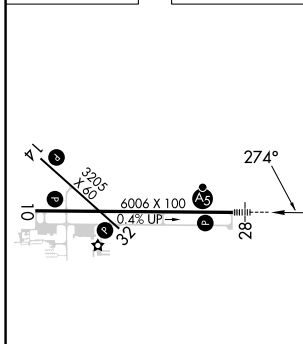
ASOS 121.55	SOUTH BEND APP CON* 118.55 257.8	SOUTH BEND CLNC DEL 119.7	UNICOM 123.0 (CTAF) 0
-----------------------	--	-------------------------------------	---------------------------------



EC-1, 05 SEP 2024 to 03 OCT 2024

EC-1, 05 SEP 2024 to 03 OCT 2024

ELEV 649	TDZE 649
-----------------	-----------------



CATEGORY	A	B	C	D
S-ILS 28		849-1/2	200 (200-1/2)	
S-LOC 28	1060-1/2	411 (500-1/2)	1060-3/4	411 (500-3/4)
CIRCLING	1140-1 491 (500-1)	1160-1 511 (600-1)	1300-1 3/4 651 (700-1 3/4)	1340-2 691 (700-2)