

MAYPORT, FLORIDA

# COPTER RNAV (GPS) RWY 23

WAAS CH <b>45485</b> W23B	APCH CRS <b>229°</b>	Rwy ldg TDZE 8001 15 Arprt Elev 15
---------------------------------	-------------------------	--

- (USN)

MAYPORT NS (ADM DAVID L MC DONALD FLD) (KNRB)

RNP APCH

RADAR required

⚠ \* LPV and LNAV/VNAV procedures are authorized only when the St. Johns River is clear of vessels from the mouth of Haulover Creek to St. Johns Point. ATC will advise aircraft on final approach if a conflict is present and coordinate a missed approach as required. Does not apply to practice approaches in VMC.

MISSSED APPROACH: Climb to 600 then climbing left turn to 1500 direct to CONWY and hold.

ATIS * <b>236.775</b>	JACKSONVILLE APP CON/DEP CON <b>124.9 308.4</b>	TOWER * <b>118.75 239.3</b>	GND CON <b>126.5 233.7</b>	ASR/PAR
--------------------------	--	--------------------------------	-------------------------------	---------

For uncompensated Baro-VNAV systems, LNAV/VNAN NA below -15°C or above 54°C.

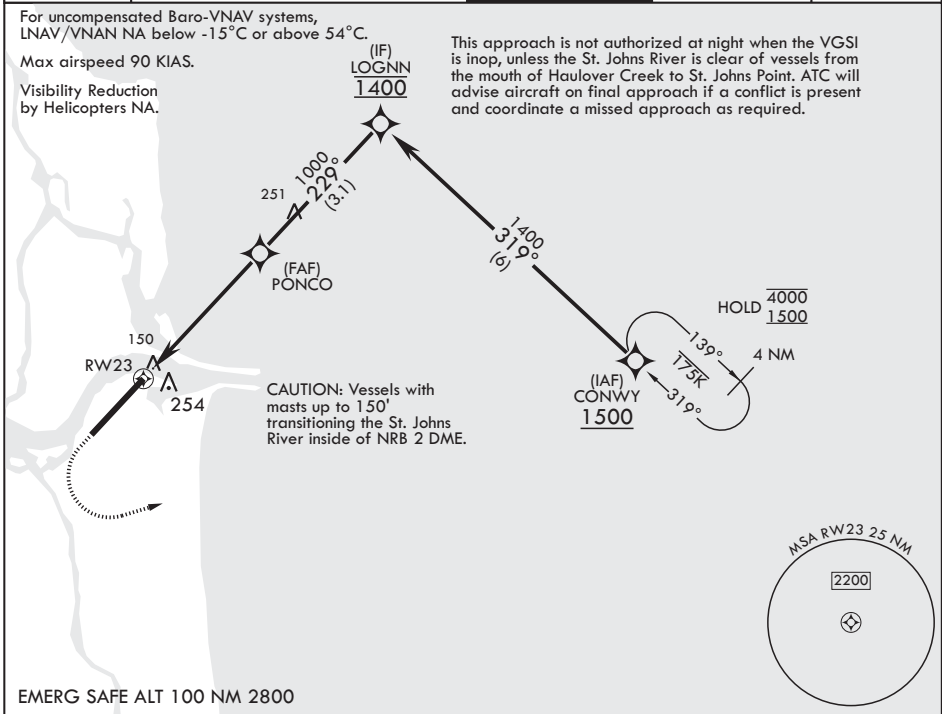
Max airspeed 90 KIAS.

Visibility Reduction by Helicopters NA.

(IF)  
LOGN N  
1400

This approach is not authorized at night when the VGSI is inop, unless the St. Johns River is clear of vessels from the mouth of Haulover Creek to St. Johns Point. ATC will advise aircraft on final approach if a conflict is present and coordinate a missed approach as required.

SE-3, 05 SEP 2024 to 03 OCT 2024



EMERG SAFE ALT 100 NM 2800

600 crs 229°	1500	CONWY	ELEV 15	TDZE 15
--------------------	------	-------	---------	---------

CATEGORY	COPTER	
LPV DA*	319-1	304 (400-1)
LNAV/VNAV DA*	385-1	370 (400-1)
LNAV MDA	520-1	505 (600-1)
CIRCLING	560-1	545 (600-1)

GP 3.00° TCH 49

HIRL all Rwys  
REIL all Rwys

SE-3, 05 SEP 2024 to 03 OCT 2024

MAYPORT, FLORIDA

30°23'N - 81°25'W MAYPORT NS (ADM DAVID L MC DONALD FLD) (KNRB)

Amdt 1 05SEP24

# COPTER RNAV (GPS) RWY 23