

MAYPORT, FLORIDA

COPTER TACAN Z RWY 5

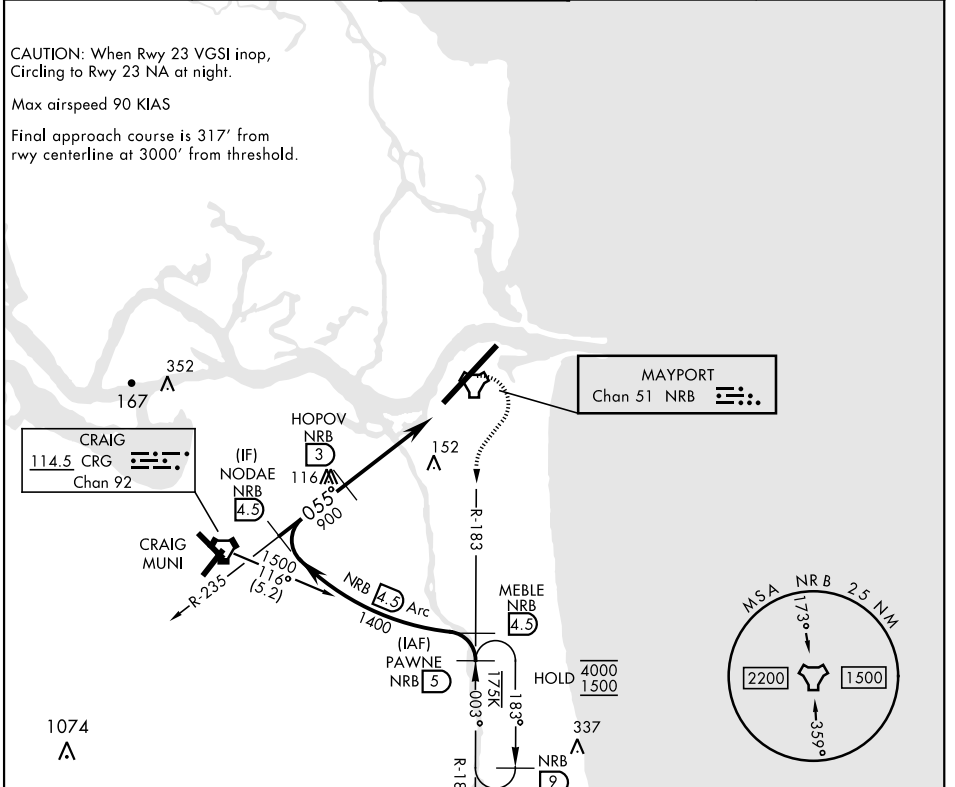
TACAN NRB Chan 51	APCH CRS 055°	Rwy Idg TDZE Arpt Elev	8001 12 15
-----------------------------	-------------------------	------------------------------	---------------------------------------

[USN]

MAYPORT NS (ADM DAVID L. MC DONALD FLD) (KNRB)

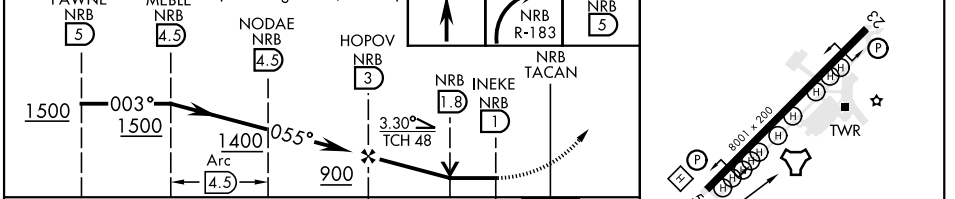
MISSED APPROACH: Climb to 500. Then climbing right turn to 1500 via NRB TACAN R-183 to PAWNE and hold.

ATIS ★ 236.775	JACKSONVILLE APP CON 124.9 308.4	TOWER ★ 118.75 239.30	GND CON 126.5 233.7	ASR/PAR
--------------------------	--	---------------------------------	-------------------------------	---------



EMERG SAFE ALT 100 NM 2800

PAWNE NRB (5)	MEBLE NRB (4.5)	NODAE NRB (4.5)	HOPOV NRB (3)	INEKE NRB (1.8)	NRB TACAN	PAWNE NRB (5)	ELEV 15	TDZE 12
---------------	-----------------	-----------------	---------------	-----------------	-----------	---------------	---------	---------



CATEGORY	COPTER		
S-5	440-1/2	428	(500-1/2)
C CIRCLING	560-1	545	(600-1)

REIL Rwy 5-23
HIRL Rwy 5-23

MAYPORT, FLORIDA 30°23'N-81° 25'W MAYPORT NS (ADM DAVID L. MC DONALD FLD) (KNRB)

Amtd 5 05SEP24

COPTER TACAN Z RWY 5

SE-3, 05 SEP 2024 to 03 OCT 2024

SE-3, 05 SEP 2024 to 03 OCT 2024