

WAAS CH 86400	APP CRS 350°	Rwy Idg TDZE Apt Elev	4007 49 49
W35A			

RNAV (GPS) RWY 35

NORWOOD MEML (OWD)

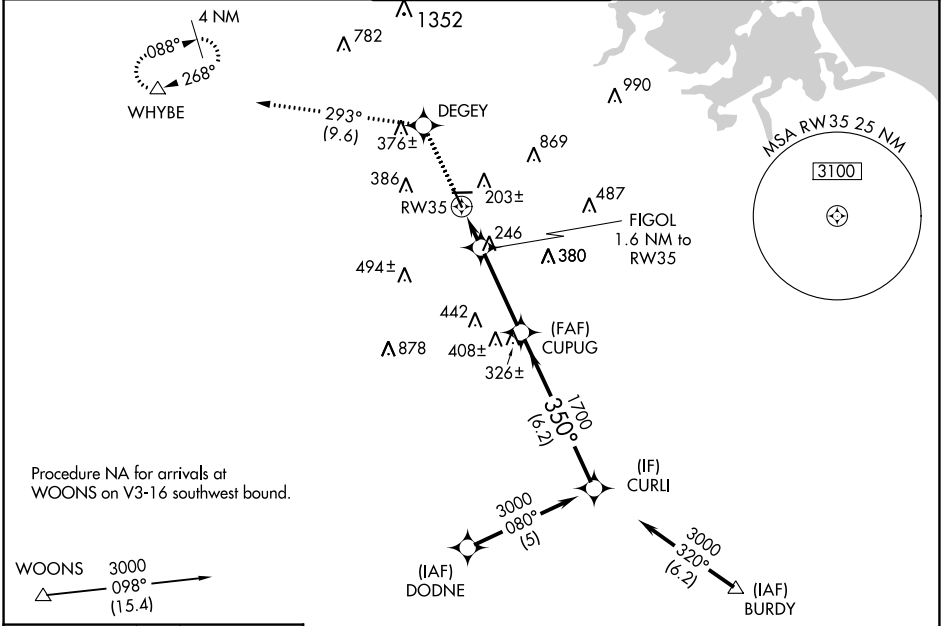
RNP APCH.

⚠ Rwy 35 helicopter visibility reduction below $\frac{3}{4}$ SM NA. For inop ALS, increase LPV all Cats visibility to $\frac{7}{8}$ SM. For uncompensated Baro-VNAV systems, LNAV/VNAV NA below -15°C or above 48°C. Circling NA at night.

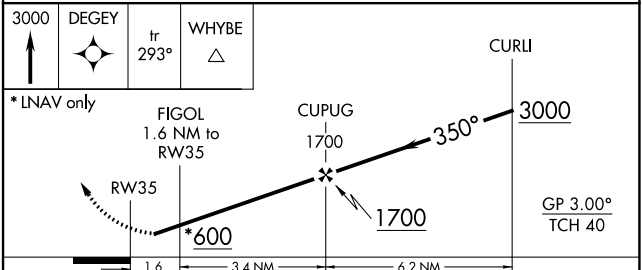
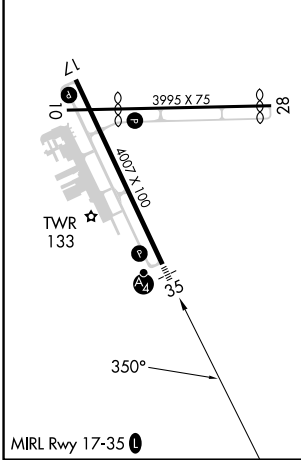


MISSED APPROACH: Climb to 3000 direct DEGEY and on track 293° to WHYBE and hold, continue climb-in-hold to 3000.

ATIS 119.95	BOSTON APP CON 124.1 263.1	NORWOOD TOWER ★ 126.0 (CTAF) 0	GND CON 121.8	CLNC DEL 121.8
-----------------------	--------------------------------------	--	-------------------------	--------------------------



ELEV 49	D	TDZE 49
---------	----------	---------



CATEGORY	A	B	C	D
LPV DA	344- $\frac{3}{4}$		295 (300- $\frac{3}{4}$)	
LNAV/VNAV DA	594-1 $\frac{3}{8}$		545 (600-1 $\frac{3}{8}$)	
LNAV MDA	580- $\frac{3}{4}$	531 (600- $\frac{3}{4}$)	580-1 $\frac{1}{4}$	531 (600-1 $\frac{1}{4}$)
C CIRCLING	600-1 551 (600-1)	700-1 651 (700-1)	1220-3	1171 (1200-3)

NE-1, 05 SEP 2024 to 03 OCT 2024

NE-1, 05 SEP 2024 to 03 OCT 2024