

RNAV (GPS) RWY 18

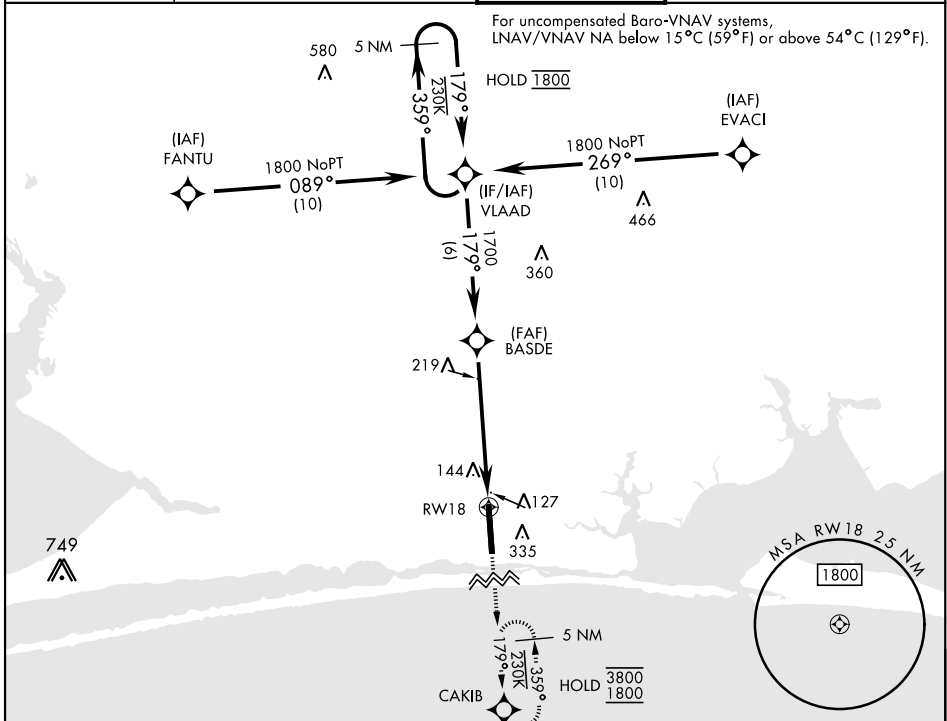
SBAS Chan 57304 W18A	APCH CRS 179°	Rwy Idg 9600 TDZE 35 Arprt Elev 38
--	-------------------------	---

[USAF]

HURLBURT FLD (KHRT)

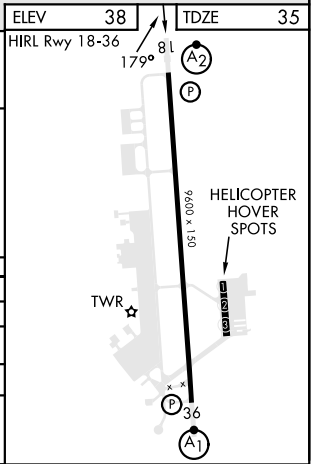
RNP APCH. DME/DME RNP - 0.3 NA	SALSF 	MISSED APPROACH: Climb to 1800 direct CAKIB and hold.
--------------------------------	-----------	---

ATIS 134.475 360.675	EGLIN APP CON 125.1 281.45 (271°- 089°) 132.1 360.6 (090°- 270°)	TOWER 126.5 351.675	GND CON 123.975 275.8
--------------------------------	--	-------------------------------	---------------------------------



EMERG SAFE ALT 100 NM 3700

5 NM Holding Pattern	VLAAD		BASDE		
	1800	179°	179°	1700	1.6 NM to RW18
GP 2.51° TCH 45	VGSi and RNAV glidepath not coincident. (VGSi Angle 2.50/TCH 41)				
CATEGORY	A	B	C	D	E
LPV DA	285- $\frac{3}{4}$		250	(300- $\frac{3}{4}$)	
LNAV/VNAV DA*	427- $\frac{7}{8}$		392	(400- $\frac{7}{8}$)	
LNAV MDA**	500- $\frac{3}{4}$	465 (500- $\frac{3}{4}$)	500-1 $\frac{1}{8}$	465	(500-1 $\frac{1}{8}$)
CIRCLING	640-1	602 (700-1)	640-1 $\frac{3}{4}$ 602 (700-1 $\frac{3}{4}$)	840-2 $\frac{1}{2}$ 802 (900-2 $\frac{1}{2}$)	840-2 $\frac{3}{4}$ 802 (900-2 $\frac{3}{4}$)



RNAV (GPS) RWY 18

SE-3, 05 SEP 2024 to 03 OCT 2024

SE-3, 05 SEP 2024 to 03 OCT 2024