

APP CRS	Rwy Idg	3751
001°	TDZE	534
	Apt Elev	537

RNAV (GPS) RWY 36

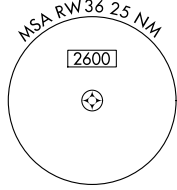
VANDALIA MUNI (VLA)

RNP APCH - GPS.

⚠ Rwy 36 helicopter visibility reduction below ¾ SM NA. When local altimeter setting not received, use Salem altimeter setting; increase all MDAs 60 feet and visibility Cats C and D ¼ SM.

MISSED APPROACH: Climb to 2400 direct LITIC and hold.

AWOS-AV 122.8	KANSAS CITY CENTER 124.3 269.15	UNICOM 122.8 (CTAF) 1
-------------------------	---	---------------------------------



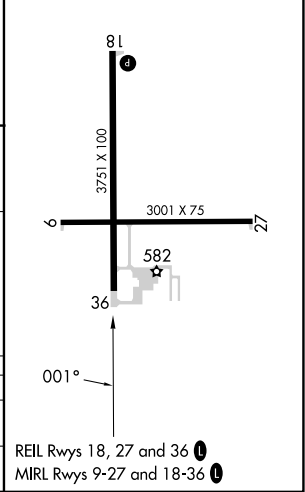
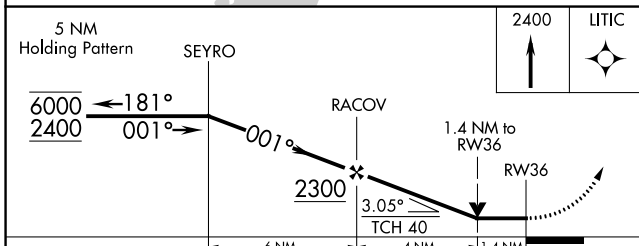
ELEV 537	TDZE 534
----------	----------

Procedure NA for arrival on ENL VORTAC airway radials 277 CW 042.

HOLD 6000/2400

2400 NoPT 360° (22.7)

(IAF) CENTRALIA ENL



CATEGORY	A	B	C	D
LNVA MDA	1020-1	486 (500-1)	1020-1 ³ / ₈	486 (500-1 ³ / ₈)
CIRCLING	1040-1	503 (600-1)	1060-1 ¹ / ₂ 523 (600-1 ¹ / ₂)	1220-2 ¹ / ₄ 683 (700-2 ¹ / ₄)

REIL Rwy 18, 27 and 36 1

MIRL Rwy 9-27 and 18-36 1

EC-3, 05 SEP 2024 to 03 OCT 2024

EC-3, 05 SEP 2024 to 03 OCT 2024