

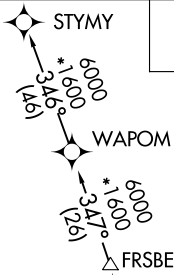
(FRSBE2.FRSBE) 23110

AL-744 (FAA)

FRSBE TWO DEPARTURE (RNAV)

FORT LAUDERDALE/HOLLYWOOD INTL (FLL)

FORT LAUDERDALE, FLORIDA



**TOP ALTITUDE:
4000**

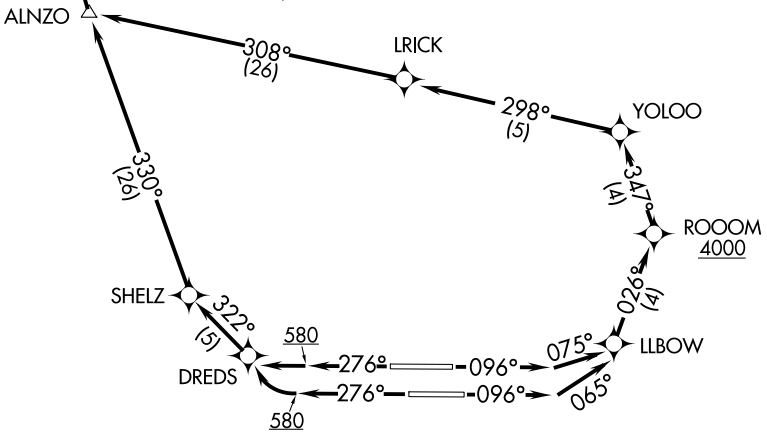
RNAV 1-DME/DME IRU or GPS.
RADAR required.

D-ATIS 135.0
CLNC DEL 128.4
CPDLC
GND CON 121.4
FORT LAUDERDALE TOWER 119.3 257.8
MIAMI DEP CON 126.05 251.1

NOTE: Jet aircraft only.
NOTE: Accelerate to 250K, if unable, advise ATC.
NOTE: WAPOM Transition for KMCO, KDAB, and KMLB area arrivals.

TAKEOFF MINIMUMS

Rwys 10L/R, 28L/R: Standard with minimum climb of 500' per NM to 580.



SE-3, 05 SEP 2024 to 03 OCT 2024

SE-3, 05 SEP 2024 to 03 OCT 2024

DEPARTURE ROUTE DESCRIPTION

SEE ADDITIONAL REQUIREMENTS ON AAUP

TAKEOFF RUNWAY 10L: Climb on heading 096° to intercept course 075° to LLBOW, then on track 026° to cross ROOOM at or above 4000, then on track 347° to YOLOO, then on track 298° to LRICK, then on track 308° to ALNZO, thence. . .

TAKEOFF RUNWAY 10R: Climb on heading 096° to intercept course 065° to LLBOW, then on track 026° to cross ROOOM at or above 4000, then on track 347° to YOLOO, then on track 298° to LRICK, then on track 308° to ALNZO, thence. . .

TAKEOFF RUNWAY 28L: Climb on heading 276° to 580, then right turn direct DREDS, then on track 322° to SHE LZ, then on track 330° to ALNZO, thence. . .

TAKEOFF RUNWAY 28R: Climb on heading 276° to 580, then direct DREDS, then on track 322° to SHE LZ, then on track 330° to ALNZO, thence. . .

. . . on track 350° to FRSBE, then on (Transition). Maintain 4000, expect filed altitude 10 minutes after departure.

STYMY TRANSITION (FRSBE2.STYMY)

WAPOM TRANSITION (FRSBE2.WAPOM)

FRSBE TWO DEPARTURE (RNAV)

(FRSBE2.FRSBE) 20APR23

FORT LAUDERDALE, FLORIDA

FORT LAUDERDALE/HOLLYWOOD INTL (FLL)