

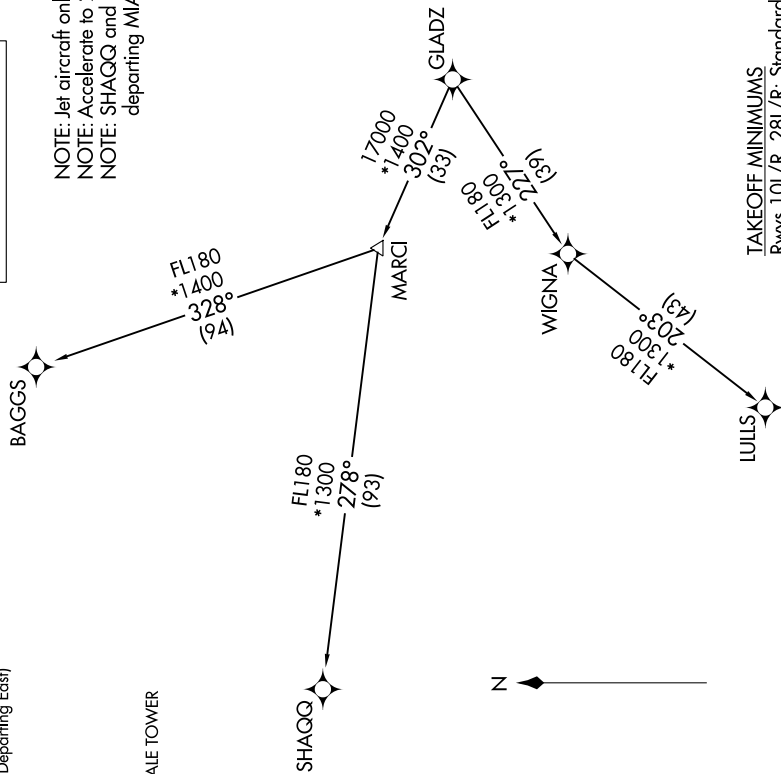
SE-3, 05 SEP 2024 to 03 OCT 2024

RNAV-1 DME/DME/IRU or GPS.  
RADAR required.

**TOP ALTITUDE:  
ASSIGNED BY ATC**

NOTE: Jet aircraft only  
NOTE: Accelerate to 250K until leaving 10000, if unable, advise ATC.  
NOTE: SHAGG and BAGGS transitions ATC assigned except aircraft departing MIA.

MIAMI DEP CON  
119.45 290.325 (Departing West)  
126.05 251.1 (Departing East)  
D-ATIS  
135.0  
CLNC DEL  
128.4  
CPDLC  
GND CON  
121.4  
FORT LAUDERDALE TOWER  
119.3 257.8



TAKEOFF MINIMUMS  
Rwys 10L/R, 28L/R: Standard with minimum climb of 500'/NM to 580.

(CONTINUED ON FOLLOWING PAGE)

NOTE: Chart not to scale.

SE-3, 05 SEP 2024 to 03 OCT 2024