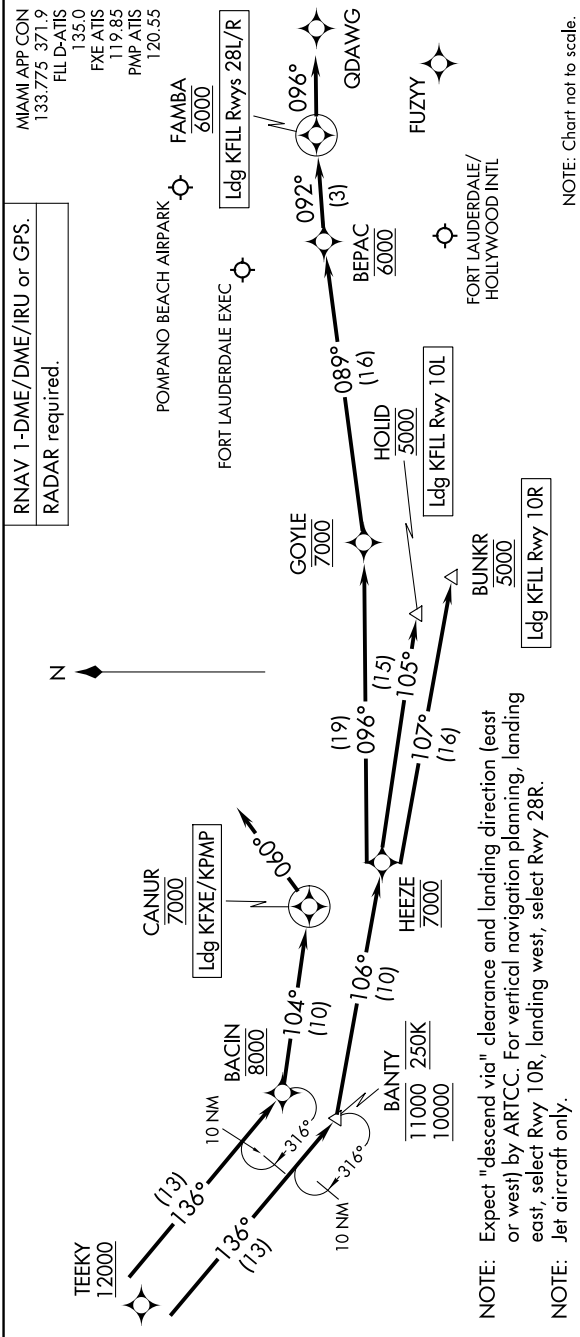


TEEKY THREE ARRIVAL (RNAV)

Arrival Routes

FORT LAUDERDALE, FLORIDA

SE-3, 05 SEP 2024 to 03 OCT 2024



ARRIVAL ROUTE DESCRIPTION

- KFL:** From TEEKY on track 136° to cross BANTY between 10000 and 11000 and at 250K, then on track 106° to cross HEEZE at 7000.
- LANDING KFL RUNWAY 10L:** From HEEZE on track 105° to cross HOLID at 5000. Expect ILS or LOC Rwy 10L approach.
- LANDING KFL RUNWAY 10R:** From HEEZE on track 107° to cross BUNKR at 5000. Expect ILS or LOC Rwy 10R approach.
- LANDING KFL RUNWAYS 28L/R:** From HEEZE on track 096° to cross GOYLE at 7000, then on track 089° to cross BEPAC at 6000, then on track 092° to cross FAMBA at 6000. Expect RADAR vectors to final approach course.
- LANDING KFEXE/KPMP:** From TEEKY on track 136° to cross BACIN at 8000, then on track 104° to cross CANJUR at 7000, then on heading 060°. Expect RADAR vectors to final approach course.

SE-3, 05 SEP 2024 to 03 OCT 2024