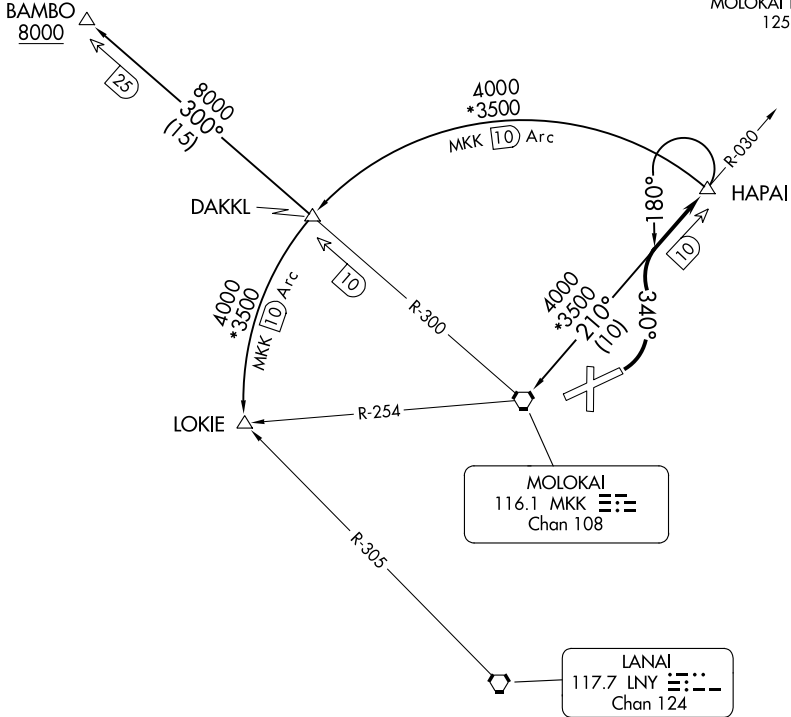


HCF CENTER  
124.1 317.5  
ATIS  
128.2  
GND CON  
121.9  
MOLOKAI TOWER\*  
125.7 306.2



PAC, 05 SEP 2024 to 31 OCT 2024

PAC, 05 SEP 2024 to 31 OCT 2024

TAKEOFF MINIMUMS

Rwys 17, 23, 35: NA-ATC.

Rwy 5: 300-1 with minimum climb of 325' per NM to 1500 or standard with minimum climb of 540' per NM to 800.

NOTE: DME required.

NOTE: Chart not to scale



DEPARTURE ROUTE DESCRIPTION

**TAKEOFF RUNWAY 5:** Climbing left turn heading 340° and MKK VORTAC R-030 to HAPAI/MKK 10 DME, thence. . . .

. . . .on assigned transition.

**BAMBO TRANSITION (HAPAI3.BAMBO):** From over HAPAI/MKK 10 DME on MKK VORTAC 10 DME Arc CCW to DAKKL/MKK 10 DME, then on MKK R-300 to BAMBO/MKK 25 DME.

**LOKIE TRANSITION (HAPAI3.LOKIE):** From over HAPAI/MKK 10 DME on MKK VORTAC 10 DME Arc CCW to LOKIE INT/MKK 10 DME.

**MOLOKAI TRANSITION (HAPAI3.MKK):** From over HAPAI/MKK 10 DME, left turn heading 180° and MKK R-030 to MKK VORTAC.