

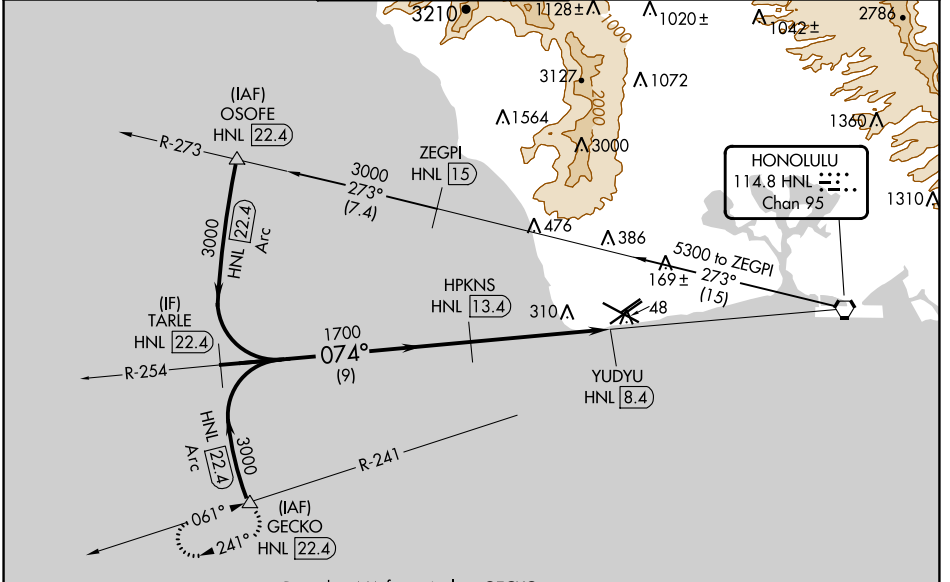
VORTAC HNL 114.8 Chan 95	APP CRS 074°	Rwy Idg TDZE Apt Elev 7989 17 30
--	------------------------	--

VOR/DME RWY 4R

KALAELOA (JOHN RODGERS FLD) (JRF)(PHJR)

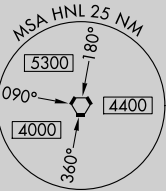
<p>▼ Circling NA north of Rwy 4R-22L. Inop table does not apply.</p>	<p>MISSED APPROACH: Climbing right turn to 3000 via heading 248° and HNL VORTAC R-241 to GECKO/HNL 22.4 DME and hold.</p>
---	---

ATIS 119.8	HCF APP CON 118.3 269.0	KALAELOA TOWER ★ 132.6 (CTAF) 0 340.2	GND CON 123.8 336.4	CLNC DEL 121.7 380.5
----------------------	-----------------------------------	--	-------------------------------	--------------------------------



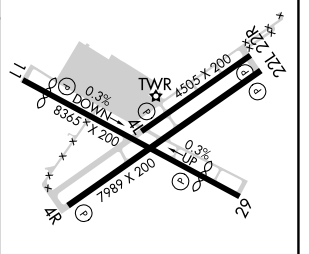
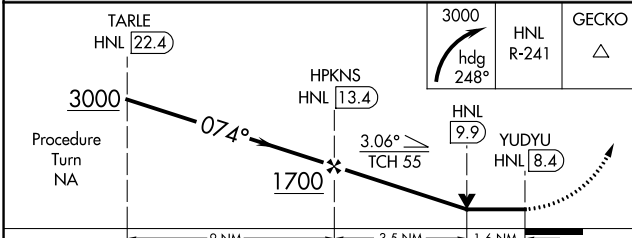
PAC, 05 SEP 2024 to 31 OCT 2024

PAC, 05 SEP 2024 to 31 OCT 2024



Procedure NA for arrivals at GECKO via V16 southeast bound.

ELEV 30	TDZE 17
---------	---------



CATEGORY	A	B	C	D
S-4R	560-1 543 (600-1)		560-1½ 543 (600-1½)	560-1¾ 543 (600-1¾)
C CIRCLING	560-1 530 (600-1)		560-1½ 530 (600-1½)	580-2 550 (600-2)

MIRL Rwy 4L-22R, 4R-22L and 11-29