


VORTAC LIH 113.5 Chan 82	APP CRS 328°	Rwy Idg TDZE 96 Apt Elev 153
---------------------------------------	------------------------	--

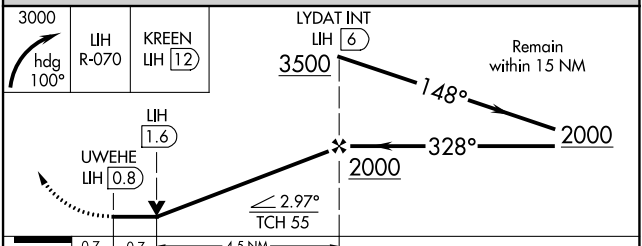
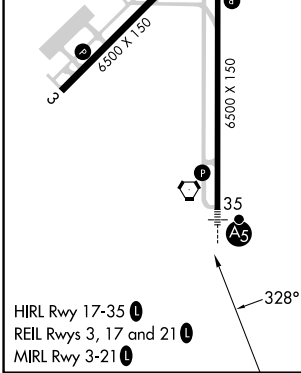
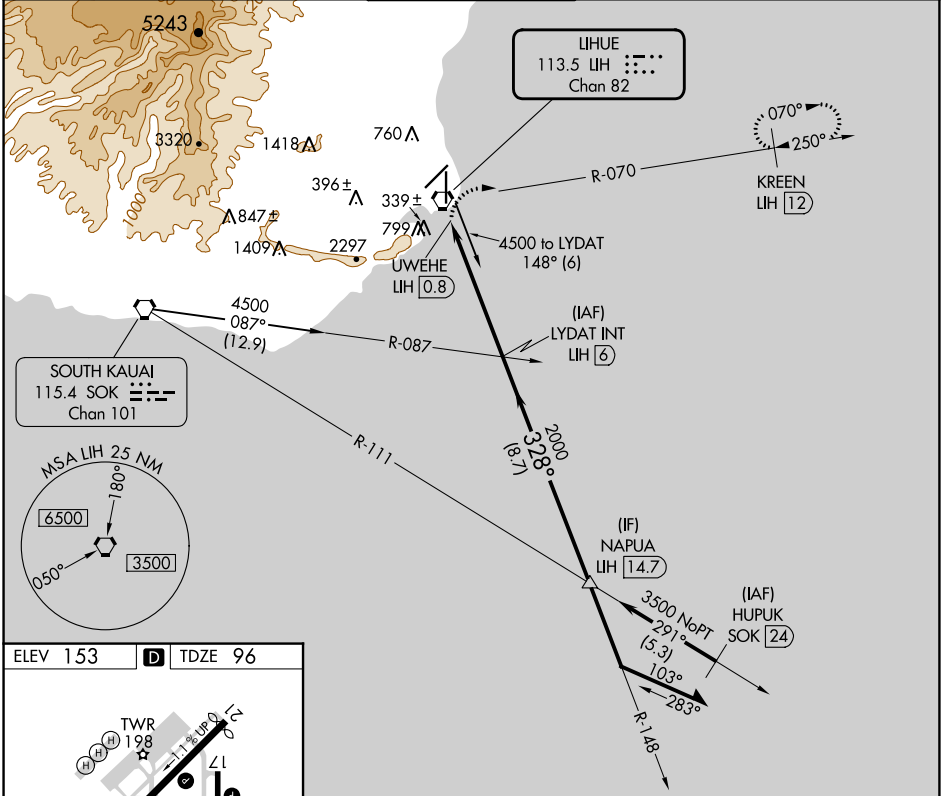
VOR or TACAN RWY 35

LIHUE (LIH)(PHLI)

⚠ Circling NA at night. Inoperative table does not apply.
Circling NA west of Rwy 17-35. DME or RADAR required.

MALS 
MISSED APPROACH: Climbing right turn to 3000 via heading 100° and LIH VORTAC R-070 to KREEN/12 DME/RADAR and hold.

ATIS 127.2	HCF CENTER 126.5 269.4	LIHUE TOWER* 118.9(CTAF) 263.1	GND CON 121.9	CLNC DEL 126.5 269.4 (When twr closed)
----------------------	----------------------------------	---	-------------------------	---



CATEGORY	A	B	C	D	E
S-35	600-1	504 (500-1)	600-1½	504 (500-1½)	600-1¾ 504 (500-1¾)
CIRCLING	600-1 447 (500-1)	620-1 467 (500-1)	620-1½ 467 (500-1½)	720-2	567 (600-2)