

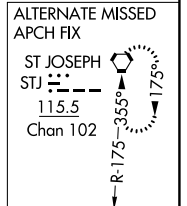
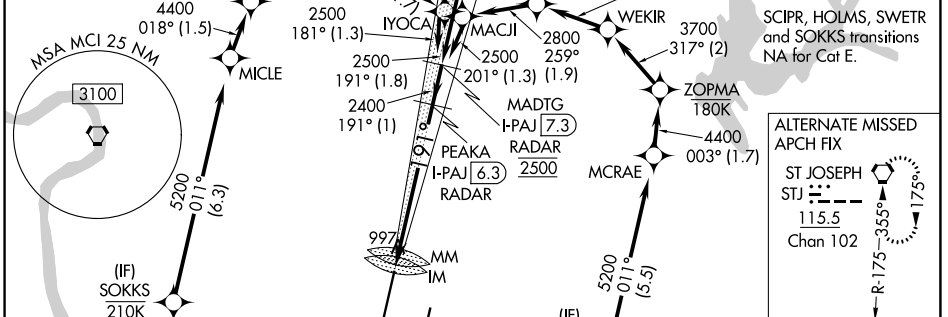
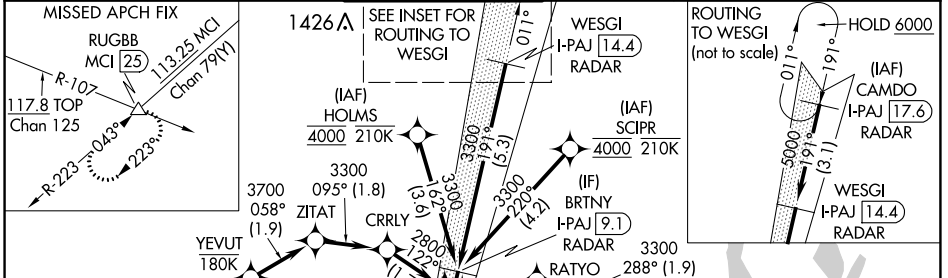
LOC/DME I-PAJ <b>109.1</b> Chan 28	APP CRS <b>191°</b>	Rwy Idg <b>10801</b> TDZE <b>991</b> Apt Elev <b>1027</b>
--	------------------------	---

# ILS RWY 19R (SA CAT I)

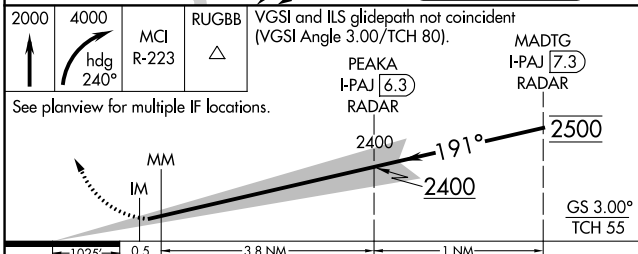
KANSAS CITY INTL (MCI)

RNP APCH - GPS. From SCIPR or HOLMS or SWETR or SOKKS.	ALSF-2 	MISSED APPROACH: Climb to 2000 then climbing right turn to 4000 on heading 240° and MCI VORTAC R-223 to RUGBB INT/MCI 25 DME and hold.
DME or RADAR required. RADAR required for procedure entry at CAMDO.		
Requires specific OPSPEC, MSPEC, or LOA approval. Simultaneous approach authorized except from SCIPR, HOLMS, SOKKS, and SWETR.		

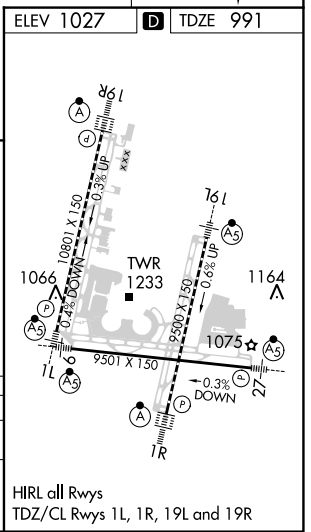
D-ATIS <b>128.375</b>	KANSAS CITY APP CON <b>120.95 318.1</b>	INTERNATIONAL TOWER <b>128.2 254.25</b>	GND CON <b>121.8</b>	CLNC DEL <b>135.7</b>	CPDLC
--------------------------	--	--	-------------------------	--------------------------	-------



2000	4000	MCI R-223	RUGBB	VGSI and ILS glidepath not coincident (VGSI Angle 3.00/TCH 80).	MADTG I-PAJ 7.3 RADAR
See planview for multiple IF locations.				PEAKA I-PAJ 6.3 RADAR	



CATEGORY	A	B	C	D	E
S-ILS 19R	RA 135/14 150 DA 1141				
<b>SA CATEGORY I ILS - SPECIAL AIRCREW &amp; AIRCRAFT CERTIFICATION REQUIRED</b>					



NC-3, 05 SEP 2024 to 03 OCT 2024

NC-3, 05 SEP 2024 to 03 OCT 2024