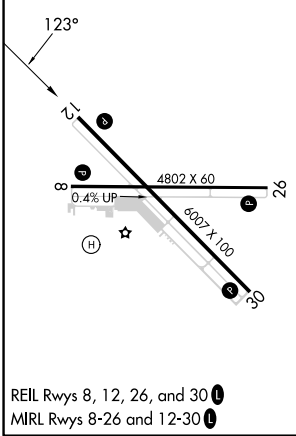
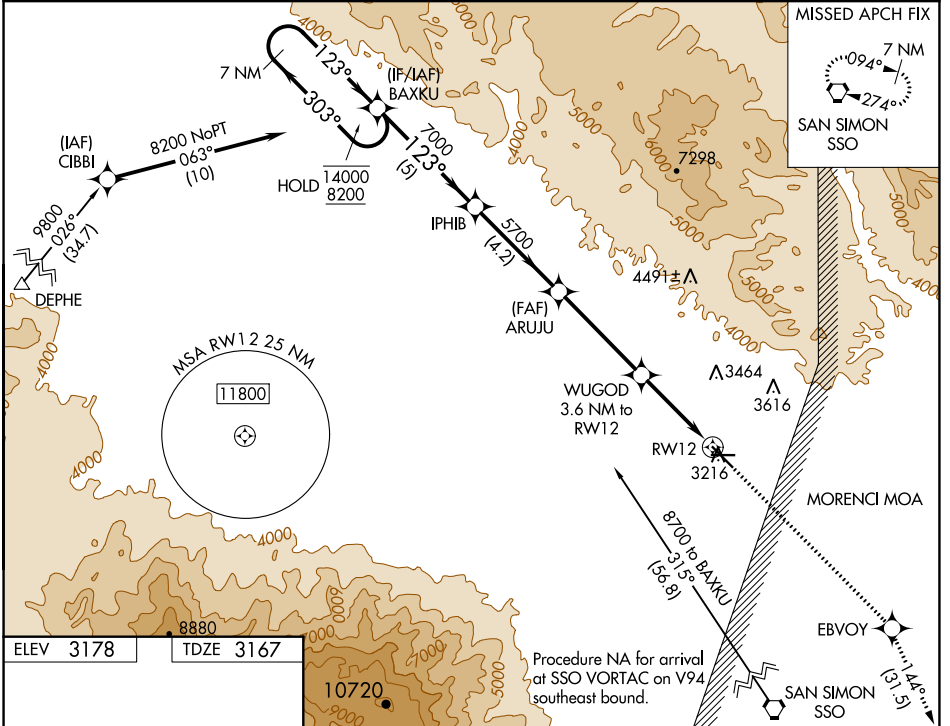


WAAS CH <b>69516</b> <b>W12A</b>	APP CRS <b>123°</b>	Rwy Idg TDZE Apt Elev	<b>6007</b> <b>3167</b> <b>3178</b>
--	------------------------	-----------------------------	---

# RNAV (GPS) RWY 12

SAFFORD RGNL/1LT DUANE SPALSBURY FLD (SAD)

RNP APCH - GPS.		MISSED APPROACH: Climb to 10000 direct EBVOY and on track 144° to SSO VORTAC and hold.	
<p><b>⚠</b> Circling to Rwy 8 NA at night. Circling NA northeast of Rwy 12 and north of Rwy 26. For uncompensated Baro-VNAV systems, LNAV/VNAV NA below -6°C or above 54°C.</p>			
ASOS <b>124.175</b>	ALBUQUERQUE CENTER <b>134.45 327.15</b>	UNICOM <b>122.8 (CTAF) 0</b>	



7 NM Holding Pattern		BAXKU		IPHIB		ARUJU		WUGOD		EBVOY		SSO	
14000 ← 303°		8200 123° →		7000		5700		3.6 NM to RWY 12		↑ 10000		tr 144°	
GP 3.00°		TCH 40		5700		4360		3.6 NM to RWY 12		1 NM to RWY 12		RWY 12	
		5 NM		4.2 NM		4.2 NM		2.7 NM		1 NM			
CATEGORY		A		B		C		D					
LPV DA				3417-¾		250 (300-¾)							
LNAV/VNAV DA				3417-¾		250 (300-¾)							
LNAV MDA				3520-1		353 (400-1)							
CIRCLING		3580-1 402 (500-1)		3640-1 462 (500-1)		3640-1½ 462 (500-1½)		3900-2¼ 722 (800-2¼)					

SAFFORD, ARIZONA  
Amdt 1 30NOV23

SAFFORD RGNL/1LT DUANE SPALSBURY FLD (SAD)  
32°51'N-109°38'W  
**RNAV (GPS) RWY 12**

SW-4, 05 SEP 2024 to 03 OCT 2024

SW-4, 05 SEP 2024 to 03 OCT 2024