

WAAS CH 77523 W17A	APP CRS 166°	Rwy Idg TDZE Apt Elev	13052 2830 2885
--	------------------------	-----------------------------	--

RNAV (GPS) RWY 17

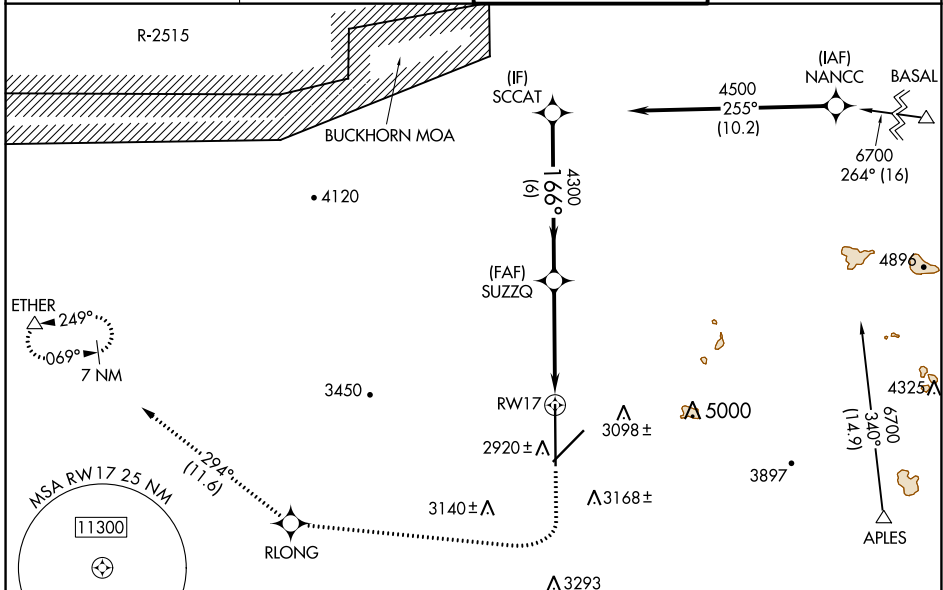
SOUTHERN CALIFORNIA LOGISTICS (V'CV)

RNP APCH - GPS.

⚠ Circling NA for Cats C and D southeast of Rwy 35-21. Baro-VNAV and VDP NA when using Edwards AFB altimeter setting. For uncompensated Baro-VNAV systems, LNAV/VNAV NA below -20°C or above 54°C. When local altimeter setting not received, use Edwards AFB altimeter setting: increase LPV DA to 3183 feet and all visibilities to RVR 5500; increase LNAV/VNAV DA to 3233 feet and all visibilities to RVR 6000. Increase all MDAs 160 feet and Circling visibility Cat C 1/2 SM.

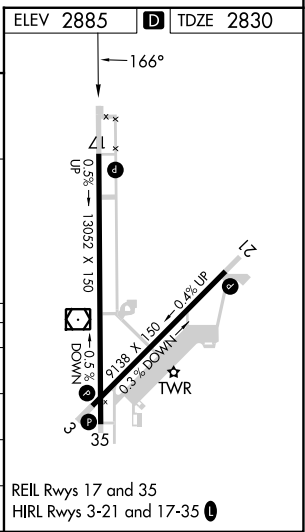
MISSED APPROACH: Climb to 3500 then climbing right turn to 6000 direct RLONG and on track 294° to ETHER and hold.

ATIS * 135.475	JOSHUA APP CON 124.55 363.0	VICTORVILLE TOWER* 118.35 (CTAF) 0 282.225	GND CON 124.45
--------------------------	---------------------------------------	--	--------------------------



VGSI and RNAV glidepath not coincident (VGSI Angle 3.00/TCH 81).

	3500	6000	RLONG	ETHER
SCCAT	4500	4300		
GP 3.00° TCH 60	4500	4300		
CATEGORY	A	B	C	D
LPV DA		3030/40	200 (200-3/4)	
LNAV/VNAV DA		3080/40	250 (200-3/4)	
LNAV MDA		3180/55	350 (300-1)	
CIRCLING	3380-1 495 (500-1)	3420-1 535 (600-1)	3460-1 1/2 575 (600-1 1/2)	3780-3 895 (900-3)



SW-3, 05 SEP 2024 to 03 OCT 2024

SW-3, 05 SEP 2024 to 03 OCT 2024

REIL Rwy 17 and 35
HIRL Rwy 3-21 and 17-35