

WAAS CH <b>49005</b> <b>W12A</b>	APP CRS <b>119°</b>	Rwy Idg TDZE <b>547</b> Apt Elev <b>549</b>
--	------------------------	---

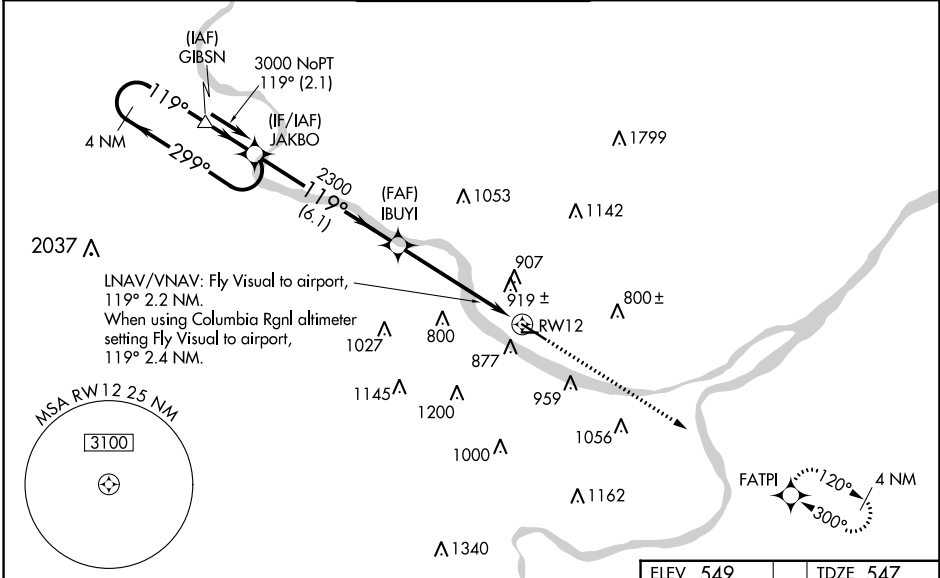
# RNAV (GPS) RWY 12

JEFFERSON CITY MEML (JEF)

**⚠** For uncompensated Baro-VNAV systems, LNAV/VNAV NA below -16°C (4°F) or above 48°C (118°F). DME/DME RNP-0.3 NA. Helicopter visibility reduction below 3/4 SM NA. When local altimeter setting not received, use Columbia Rgnl altimeter setting and increase all DA/MDA 80 feet; and increase LPV all Cats visibility 1/4 SM, LNAV/VNAV Cats C and D visibility 1/2 SM, LNAV Cats B, C and D visibility 1/4 SM and Circling Cats A, B and C visibility 1/4 SM. Baro-VNAV and VDP NA when using Columbia Rgnl altimeter setting. Circling Rwy 9 NA at night.

MISSED APPROACH: Climb to 2800 direct FATPI and hold.

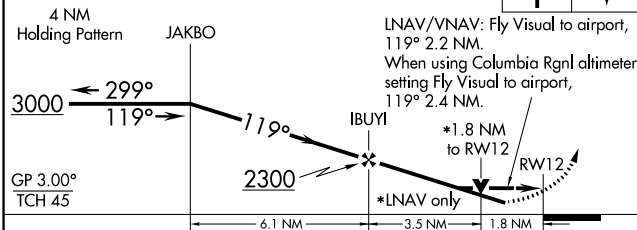
ASOS <b>133.625</b>	MIZZU APP CON <b>124.375 353.925</b>	JEFFERSON CITY TOWER * <b>125.6 (CTAF) 0</b>	GND CON <b>121.7</b>	UNICOM <b>122.95</b>
------------------------	---	---	-------------------------	-------------------------



NC-3, 05 SEP 2024 to 03 OCT 2024

NC-3, 05 SEP 2024 to 03 OCT 2024

VGSI and RNAV glidepath not coincident (VGSI Angle 3.50/TCH 64).



CATEGORY	A	B	C	D
LPV DA	951-1½ 404 (500-1½)			
LNAV/VNAV DA	1284-2 737 (800-2)		1284-2¼ 737 (800-2¼)	
LNAV MDA	1260-1 713 (800-1)	1260-2 713 (800-2)		1260-2¼ 713 (800-2¼)
<b>C</b> CIRCLING	1320-1 771 (800-1)	1320-1¼ 771 (800-1¼)	1320-2¼ 771 (800-2¼)	1560-3 1011 (1100-3)

ELEV 549 TDZE 547

REIL Rwy 9, 12, and 27  
MIRL Rwy 9-27  
HIRL Rwy 12-30